

LOC I-JHF 111.7	APP CRS 159°	Rwy Idg 5387 TDZE 341 Apt Elev 341
---------------------------	------------------------	---

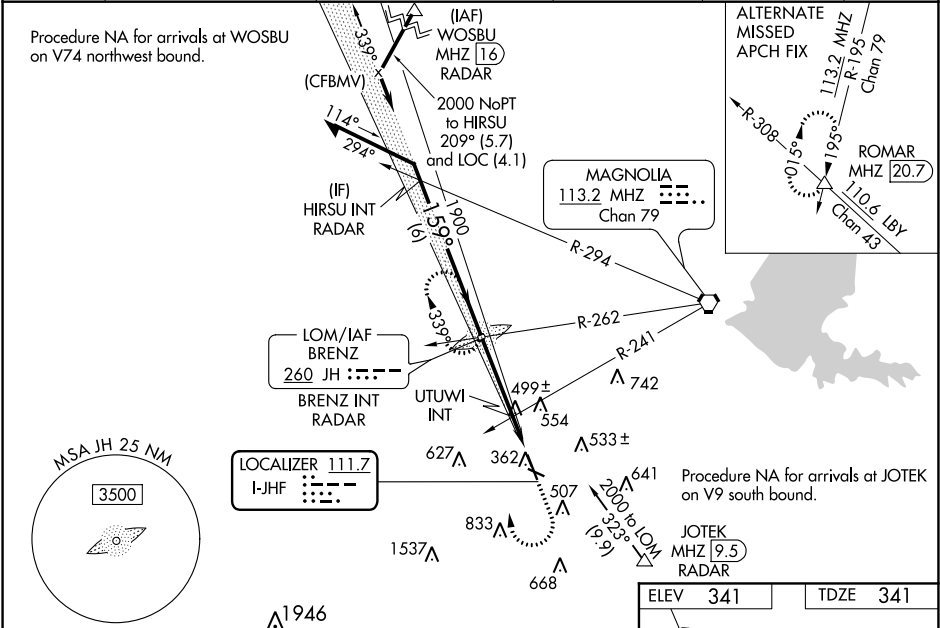
ILS or LOC RWY 16
HAWKINS FIELD (HKS)

⚠ When local altimeter setting not received, use Jackson Medgar Wiley-Evers Intl altimeter setting, increase all DA 19 feet and all MDA 20 feet. Increase Circling Cat C visibility ¼ mile and UTUWI fix Circling Cat C visibility ¼ mile. For inop MALSR, increase S-LOC 16 Cats C/D visibility ¾. Increase UTUWI fix S-LOC 16 Cats C/D visibility ¾. For inop MALSR when using Jackson Medgar Wiley-Evers Intl altimeter setting increase S-LOC Cats C/D visibility ¾ mile. Glideslope unusable when control tower closed, only localizer minimums authorized during this period. ADF required.

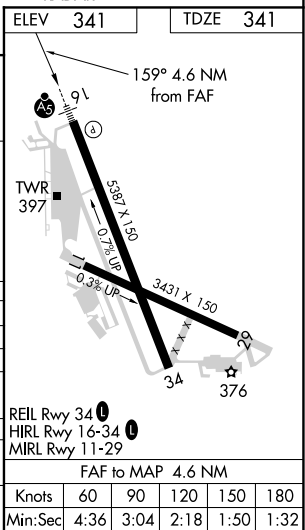
MALSR

MISSED APPROACH:
Climb to 2000 then climbing right turn to 3500 direct BRENZ LOM and hold.

ASOS 120.625	JACKSON APP CON ★ 123.9 319.2	HAWKINS TOWER ★ 119.65 (CTAF) 0 257.8	GND CON 121.9 239.0	CLNC DEL 121.9 (when twr closed)	UNICOM 122.95
------------------------	---	---	-------------------------------	---	-------------------------



Remain within 10 NM		BENZ LOM/INT RADAR		2000 3500 BRENZ	
2000		1946		*860 when using Jackson Medgar Wiley-Evers Intl altimeter setting.	
159°		1866		UTUWI INT	
1900		3.1 NM		*840	
1537		1.5 NM			
CATEGORY	A	B	C	D	
S-ILS 16		541-½	200 (200-½)		
S-LOC 16		840-½ 499 (500-½)	840-1 499 (500-1)		
CIRCLING	860-1 519 (600-1)	880-1 539 (600-1)	1140-2¼ 799 (800-2¼)	1320-3 979 (1000-3)	
UTUWI FIX MINIMUMS (DUAL VOR RECEIVERS REQUIRED)					
S-LOC 16		760-½ 419 (500-½)	760-¾ 419 (500-¾)		
CIRCLING	860-1 519 (600-1)	880-1 539 (600-1)	1140-2¼ 799 (800-2¼)	1320-3 979 (1000-3)	



SC-4, 03 DEC 2020 to 31 DEC 2020

SC-4, 03 DEC 2020 to 31 DEC 2020