

WAAS CH <b>56416</b> <b>W34A</b>	APP CRS <b>339°</b>	Rwy Idg <b>5387</b> TDZE <b>322</b> Apt Elev <b>341</b>
--	------------------------	---

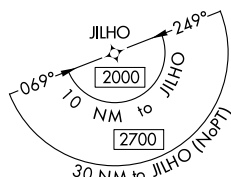
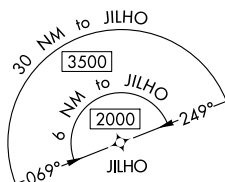
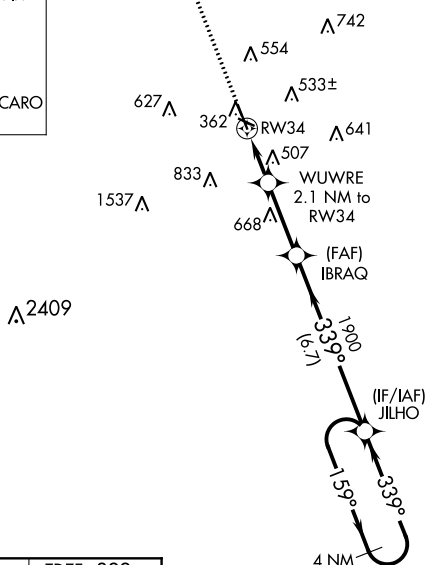
RNAV (GPS) RWY 34  
HAWKINS FIELD (HKS)

**⚠** For uncompensated Baro-VNAV systems, LNAV/VNAV NA below -6°C (22°F) or above 54°C (130°F). DME/DME RNP-0.3 NA. Baro-VNAV and VDP NA when using Jackson-Medgar Wiley Evers Intl altimeter setting. When local altimeter setting not received, use Jackson-Medgar Wiley Evers Intl altimeter setting and increase all DA 19 feet and all MDA 20 feet. Increase LPV and LNAV/VNAV all Cats visibility  $\frac{1}{8}$  mile and Circling Cat C visibility  $\frac{1}{4}$  mile. Rwy 34 helicopter visibility reduction below  $\frac{3}{4}$  SM NA.

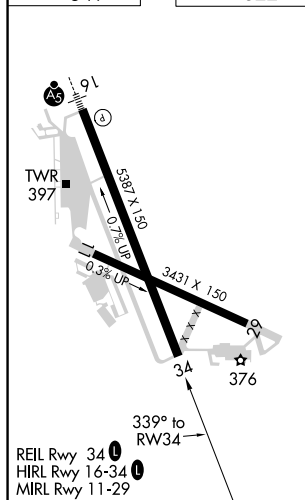
**MISSED APPROACH.**  
Climb to 2000 direct  
OCARO and hold.

ASOS <b>120.625</b>	JACKSON APP CON ★ <b>123.9 319.2</b>	HAWKINS TOWER ★ <b>119.65 (CTAF) 0 257.8</b>	GND CON <b>121.9 239.0</b>	CLINIC DEL <b>121.9</b> (when twr closed)	UNICOM <b>122.95</b>
------------------------	---	---	-------------------------------	---	-------------------------

MISSED APCH FIX



ELEV 341		TDZE 322
----------	--	----------



**\*LNAV only.**

**4 NM Holding Pattern**

**159°**

**2000**

**339°**

**JILHO**

**IBRAQ**

**1900**

**1000\***

**RW34**

**GP 3.00°**

**TCH 40**

CATEGORY	A	B	C	D
LPV DA	588- $\frac{7}{8}$	266 (300- $\frac{7}{8}$ )		
LNAV/VNAV DA	670-1 $\frac{1}{8}$	348 (400-1 $\frac{1}{8}$ )		
LNAV MDA	760-1	438 (500-1)	760-1 $\frac{3}{8}$	438 (500-1 $\frac{3}{8}$ )
<b>CIRCLING</b>	860-1 519 (600-1)	880-1 539 (600-1)	1140-2 $\frac{1}{4}$ 799 (800-2 $\frac{1}{4}$ )	1320-3 979 (1000-3)