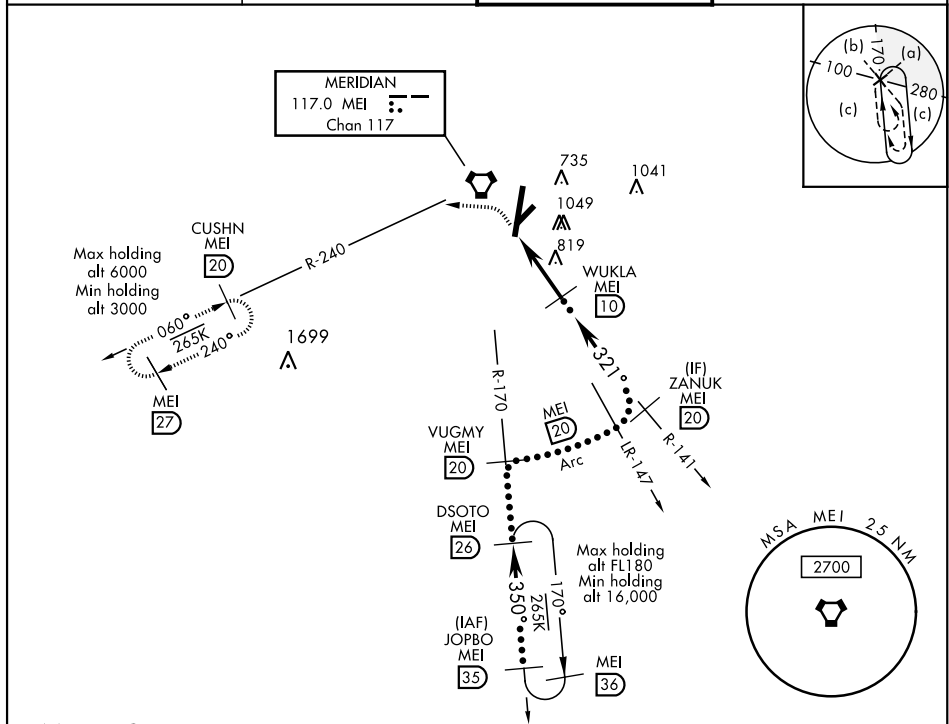


VORTAC MEI 117.0 Chan 117	APCH CRS 321°	Rwy Idg TDZE Arpt Elev N/A N/A 298	JAL-254 [USAF]	KEY FIELD (KMEI)
---	-------------------------	--	----------------	------------------

<p>V</p> <p>* Circling to Rwy 22 NA at night. Circling NA SE of Rws 1 and 22.</p>	<p>MISSED APPROACH: Climbing left turn to 3000 on heading 270° and MEI VORTAC R-240 to CUSHN/ MEI 20 DME and hold.</p>
--	--

<p>ATIS</p> <p>126.475 291.675</p>	<p>MERIDIAN APP CON</p> <p>120.5 269.325</p>	<p>KEY TOWER ★</p> <p>133.975 (CTAF) 0 257.8</p>	<p>GND CON</p> <p>121.9 348.6</p>
---	---	---	--



DME REQUIRED	
EMERG SAFE ALT 100 NM 3700	

3000	MEI R-240	CUSHN MEI 20
------	-----------	--------------

CATEGORY	C	D	E
CIRCLING*	1140-2½ 842 (900-2½)	1140-2¾ 842 (900-2¾)	1140-3 842 (900-3)

HATTIESBURG-LAUREL RGNL ALTIMETER SETTING

CIRCLING*	1280-3	982	(1000-3)
-----------	--------	-----	----------

321° 5.6 NM from FAF

MRL Rwy 4-22

HIRL Rwy 1-19

MERIDIAN, MISSISSIPPI	32° 20' N-88° 45' W	KEY FIELD (KMEI)
-----------------------	---------------------	------------------

Amtd 4A 20JUN19	HI-TACAN or VOR-B
-----------------	-------------------

SC-4, 03 DEC 2020 to 31 DEC 2020