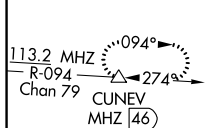


ILS or LOC RWY 19  
KEY FIELD (MET)

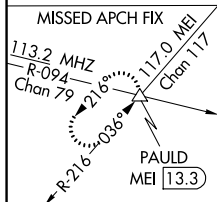
**MISSED APPROACH:**  
Climb to 1000 then  
climbing right turn to  
3000 on heading 250°  
and MEI VORTAC  
R-216 to PAULD  
INT/MEI 13.3 DME  
and hold.

ALTERNATE MISSED  
APCH FIX

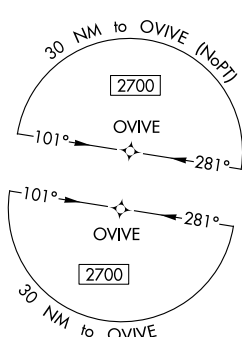


Δ 1544

## DME REQUIRED



MERIDIAN  
117.0 MEI ::  
Chan 117



GPS REQUIRED  
FOR TERMINAL  
ARRIVAL AREA

LOCALIZER 111.35  
I-IKQ  
Chan 50 (Y)

[illegible]

1000 ↑	3000 hdg 250°	MEI R-216	PAULD △	VGSI and ILS glidepath not coincident (VGSI Angle 3.00/TCH 69). #1180 when using Hattiesburg-Laurel Rgnl altimeter setting.				
*LOC only.				GOZAX INT HKQ [6.2]				
*HKQ [3] HKQ [1.7]				HOLUN HKQ [4.2]		OVIVE HKQ [13.2]		One Minute Holding Pattern
1.3 NM 1.2 NM 2.1 NM 7 NM				1800 191° 1800		011° 191° 2700		GS 3.00° TCH 54
CATEGORY	A		B		C		D	E
S-ILS 19	633/40				340 (400-¾)			
S-LOC 19	1040/40	747 (800-¾)	1040-1¾		747 (800-1¾)			
CIRCLING	1040-1	1040-1¼	1040-2¼	1120-2¾	1120-3			
	742 (800-1)	742 (800-1¼)	742 (800-2¼)	822 (900-2¾)	822 (900-3)			
HOLUN FIX MINIMUMS								
S-LOC 19	780/40	487 (500-¾)	780/50		487 (500-1)			
CIRCLING	860-1	880-1	960-1¾	1120-2¾	1120-3			
	562 (600-1)	582 (600-1)	662 (700-1¾)	822 (900-2¾)	822 (900-3)			