

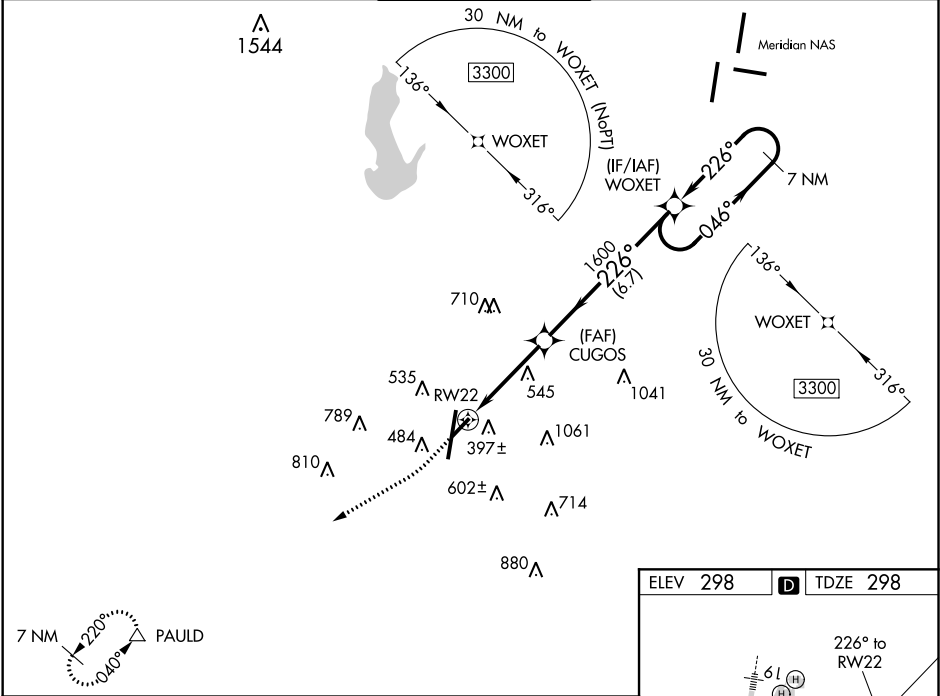
| | | |
|--|------------------------|---|
| WAAS CH 48833 W22A | APP CRS 226° | Rwy Idg 4599 TDZE 298 Apt Elev 298 |
|--|------------------------|---|

RNAV (GPS) RWY 22
KEY FIELD (MEI)

⚠ Baro-VNAV NA when using Hattiesburg-Laurel Rgnl altimeter setting. For uncompensated Baro-VNAV systems, LNAV/VNAV NA below -8°C (18°F) or above 54°C (130°F). Circling NA southeast of Rws 1 and 22. DME/DME RNP-0.3 NA. When local altimeter setting not received, use Hattiesburg-Laurel Rgnl altimeter setting and increase all DA 138 feet and all MDA 140 feet; increase LPV all Cats visibility 3/8 mile, LNAV/VNAV all Cats visibility 3/4 mile, LNAV Cat B 1/4 mile, Cat C and D visibility 3/8 mile, and Circling Cat C visibility 1/2 mile and Cat B and D visibility 1/4 mile. Helicopter visibility reduction below 1 SM NA. Straight-in/Circling Rwy 22 NA at night.

MISSED APPROACH:
Climb to 1000 then climbing right turn to 3000 direct PAULD and hold.

| | | | | |
|--------------------------------|--|--|-------------------------------|-------------------------|
| ATIS 126.475 291.675 | MERIDIAN APP CON ★ 120.5 269.325 | KEY TOWER ★ 133.975 (CTAF) 257.8 | GND CON 121.9 348.6 | UNICOM 122.95 |
|--------------------------------|--|--|-------------------------------|-------------------------|



1000 3000 PAULD

VGSI and RNAV glidepath not coincident (VGSI Angle 3.59/TCH 20). WOXET

7 NM Holding Pattern

CUGOS

1600

226°

1600

RW22

GP 3.00° TCH 52

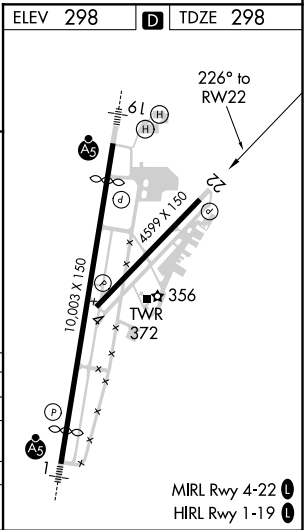
3.9 NM 6.7 NM

| CATEGORY | A | B | C | D |
|--------------|-----------|-------------|-----------------|-----------------|
| LPV DA | 562-1 | | 264 (300-1) | |
| LNAV/VNAV DA | 822-1 3/4 | | 524 (600-1 3/4) | |
| LNAV MDA | 940-1 | 642 (700-1) | 940-1 7/8 | 642 (700-1 7/8) |
| | | | 960-2 | 1120-2 3/4 |
| | | | 662 (700-2) | 822 (900-2 3/4) |

C CIRCLING

940-1 642 (700-1)

662 (700-2) 822 (900-2 3/4)



SC-4, 03 DEC 2020 to 31 DEC 2020

SC-4, 03 DEC 2020 to 31 DEC 2020