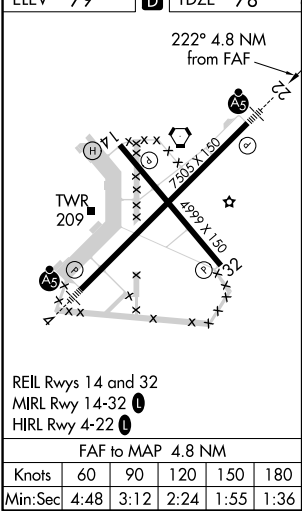
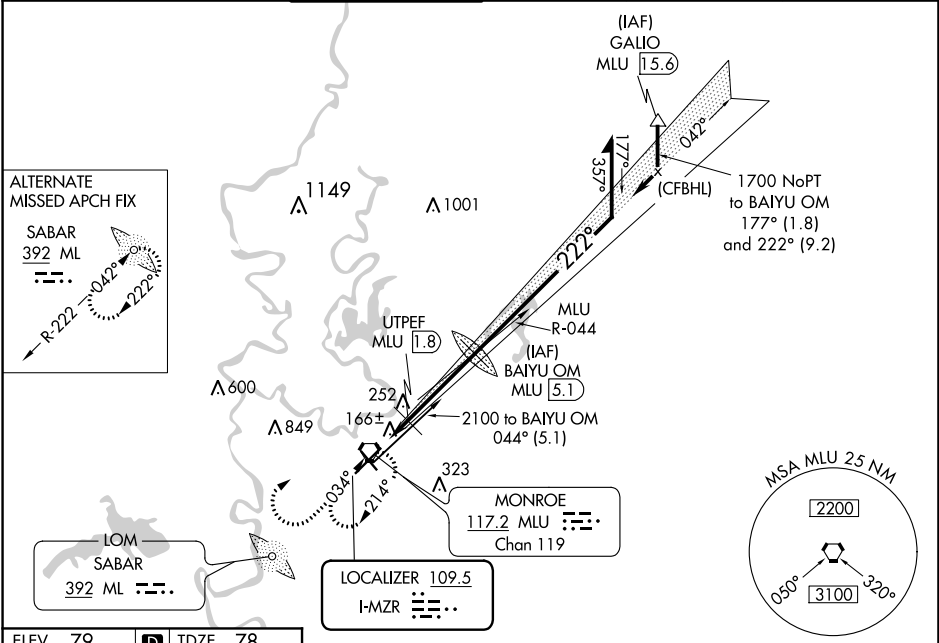

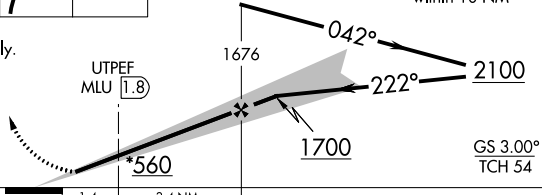


LOC I-MZR <b>109.5</b>	APP CRS <b>222°</b>	Rwy Idg <b>7505</b> TDZE <b>78</b> Apt Elev <b>79</b>
---------------------------	------------------------	---

ILS or LOC RWY 22  
MONROE RGNL (MLU)

DME or RADAR required for procedure entry.		MALSR 	MISSED APPROACH: Climb to 1800 then climbing right turn to 3000 direct MLU VORTAC and hold.		
 Circling Rwy 14 NA at night. # DME from MLU VORTAC.					
ATIS <b>125.05</b>	MONROE APP CON ★ <b>118.15 290.475</b>	MONROE TOWER ★ <b>118.9 (CTAF) 257.8</b>	GND CON <b>121.9</b>	CLNC DEL <b>121.65</b>	UNICOM <b>122.95</b>



1800 ↑	3000 ↗	MLU 	BAIYU OM MLU 5.1		Remain within 10 NM	
*LOC only.						
						
CATEGORY	A		B		C	D
S-ILS 22	278-½ 200 (200-½)					
S-LOC 22	560-½	482 (500-½)	560-1		482 (500-1)	
CIRCLING	580-1	501 (600-1)	620-1½ 541 (600-½)		640-2 561 (600-2)	
# UTPEF FIX MINIMUMS						
S-LOC 22	420-½	342 (400-½)	420-⅝		342 (400-⅝)	
CIRCLING	580-1	501 (600-1)	620-1½ 541 (600-½)		640-2 561 (600-2)	

SC-4, 03 DEC 2020 to 31 DEC 2020

SC-4, 03 DEC 2020 to 31 DEC 2020