

## HI-ILS or LOC W RWY 15

LOC I-JKC <b>108.9</b>	APCH CRS <b>149°</b>	Rwy ldg <b>11,758</b> THRE <b>163</b> Arpt Elev <b>165</b>	JAL-391 [USAF]	BARKSDALE AFB (KBAD)
---------------------------	-------------------------	--	----------------	----------------------

\* When ALS inop, increase CAT CDE RVR to 40 and vis to ¾ mile.

\*\* When ALS inop, increase CAT CDE vis to 1¾ miles.

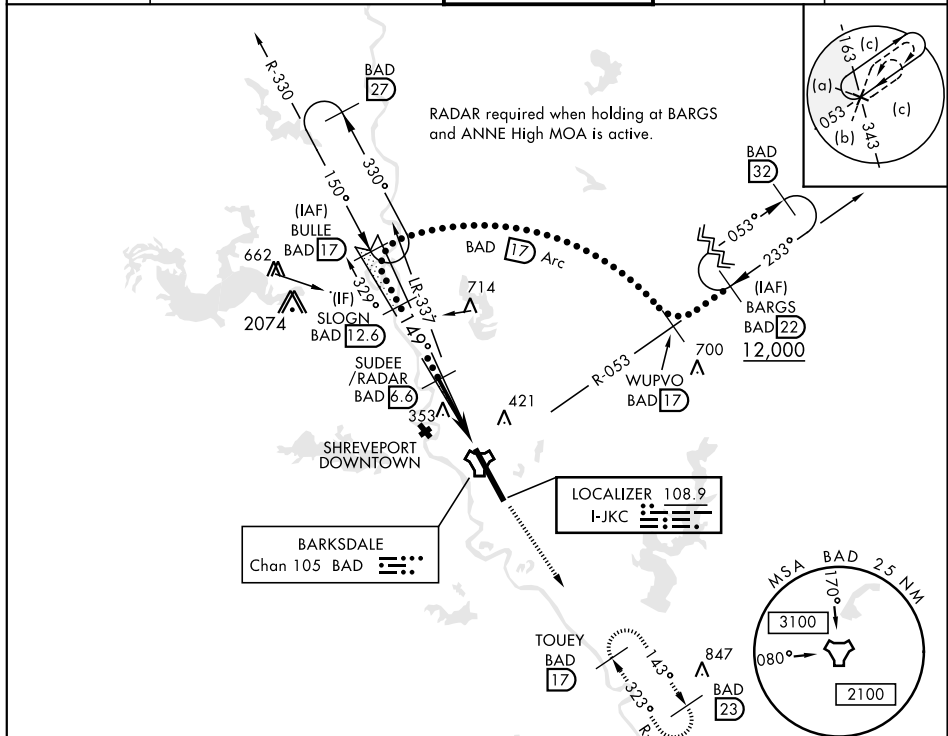
\*\*\* Circling not authorized W of Rwy.

ALSIF-1



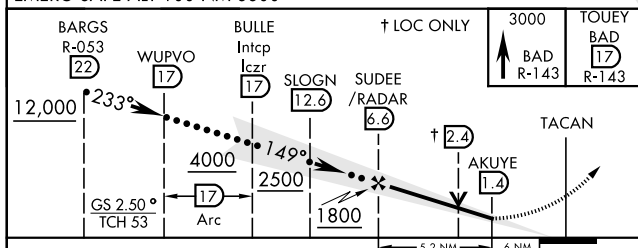
MISSED APPROACH: Climb to 3000  
via BAD R-143 direct TOUEY and hold.

ATIS <b>307.025</b>	SHREVEPORT APP CON 320°-152° <b>123.75 360.725</b> 153°-319° <b>119.9 335.55</b>	BARKSDALE TOWER <b>128.25 278.3</b>	GND CON <b>121.8 253.5</b>	ASR
------------------------	--	--	-------------------------------	-----



## RADAR or DME REQUIRED

EMERG SAFE ALT 100 NM 3300



CATEGORY	C	D	E
S-ILS 15 *	363/24	200	(200-½)
S-LOC 15 **	640/50	477	(500-1)
*** CIRCLING	NOT AUTHORIZED	760-2 595 (600-2)	780-2¼ 615 (700-2¼)

ELEV	THRE
165	163
277	288
247	206
216	255
339	247
289	33
TWR 324	
HIRL Rwy 15-33	
FAF to MAP 5.2 NM	
Knots	120 140 160 180 200
Min:Sec	2:36 2:14 1:57 1:44 1:34

## HI-ILS or LOC W RWY 15