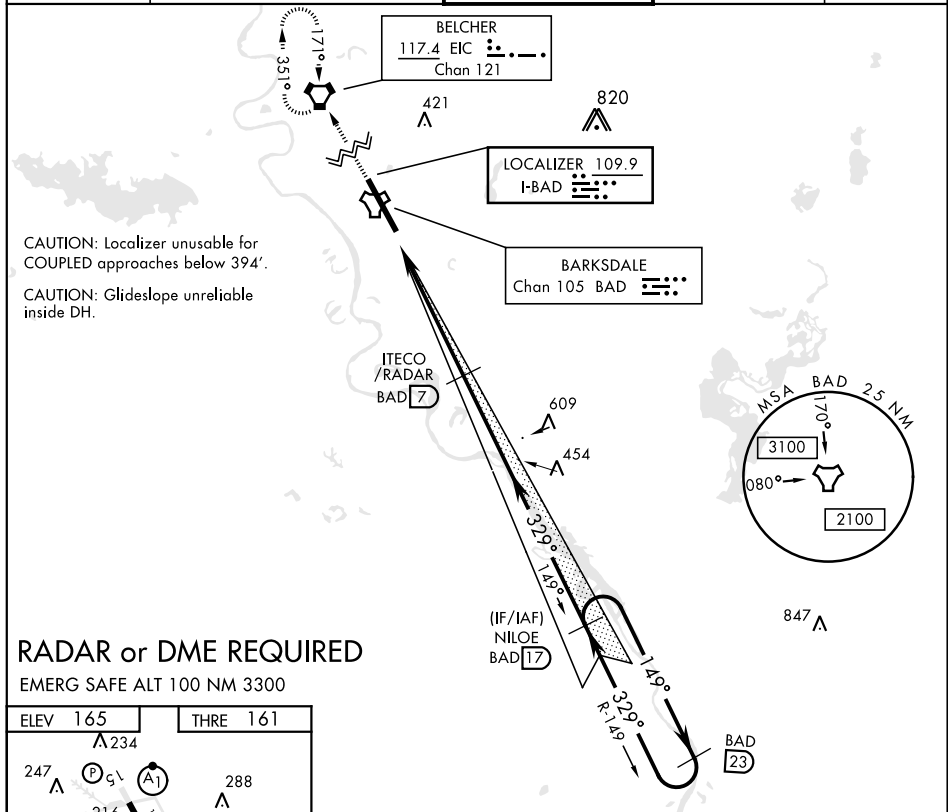


## ILS or LOC W RWY 33

LOC I-BAD <b>109.9</b>		APCH CRS <b>329°</b>		Rwy Idg <b>11,758</b> THRE <b>161</b> Arpt Elev <b>165</b>		AL-391 [USAF]		BARKSDALE AFB (KBAD)	
<p>* When ALS inop, increase RVR to 40 and vis to ¾ mile.  ** When ALS inop, increase CAT AB RVR to 55 and vis to 1 mile,  CAT CDE RVR to 60 and vis to 1 ½ miles.  *** Circling not authorized W of Rwy.</p>								MISSED APPROACH: Climb to 3100 direct EIC VORTAC and hold.	
ATIS <b>307.025</b>		SHRVEPORT APP CON 320°-152° <b>123.75 360.725</b> 153°-319° <b>119.9 335.55</b>		BARKSDALE TOWER <b>128.25 278.3</b>		GND CON <b>121.8 253.5</b>		ASR	



## RADAR or DME REQUIRED

EMERG SAFE ALT 100 NM 3300

FAF to MAP 5.2 NM					
Knots	60	90	120	150	180
Min:Sec	5:12	3:28	2:36	2:05	1:44

CATEGORY	A	B	C	D	E
S-ILS 33 *	361/24			200	(200-½)
S-LOC 33 **	560/24	399 (400-½)	560/35	399	(400-¾)
C CIRCLING	NOT AUTHORIZED			760-2 595 (600-2)	780-2 ¼ 615 (700-2 ¼)