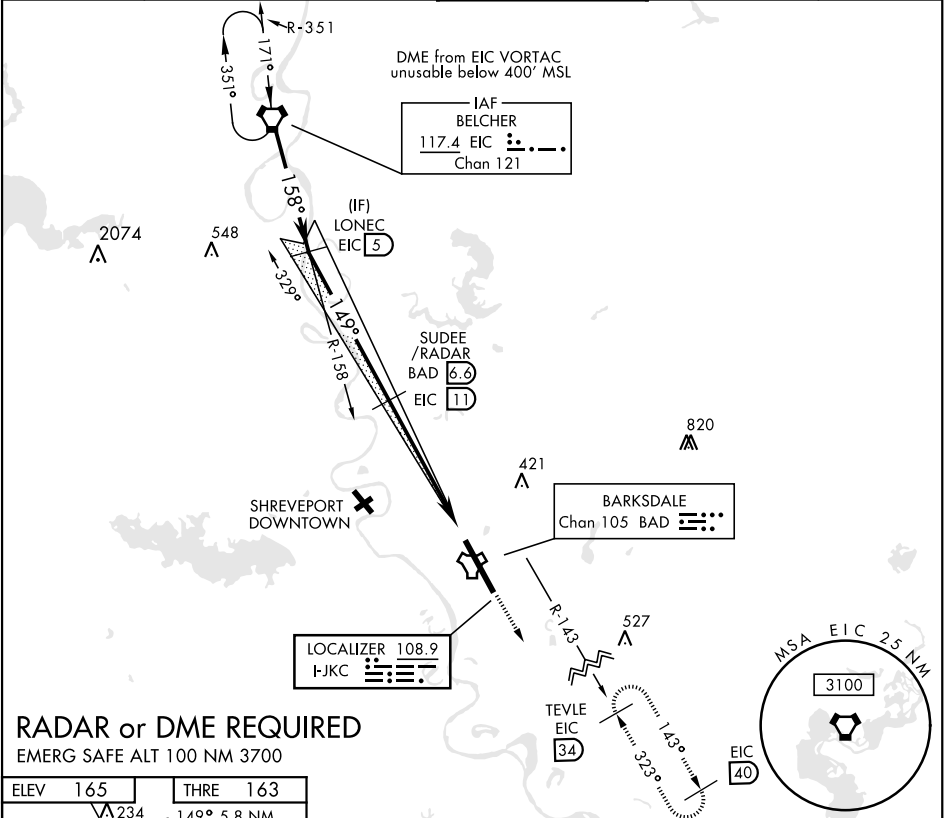
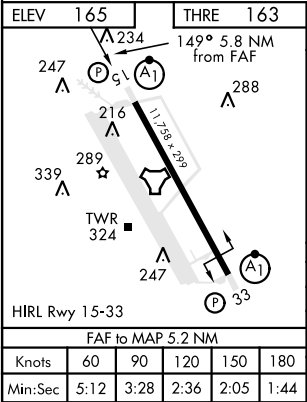


ILS or LOC Y RWY 15

LOC I-JKC 108.9	APCH CRS 149°	Rwy Idg 11,758 THRE 163 Arpt Elev 165	AL-391 [USAF]	BARKSDALE AFB (KBAD)	
* When ALS inop, increase RVR to 40 and vis to ¾ mile. ** When ALS inop, increase CAT AB RVR to 55 and vis to 1 mile, CAT CDE vis to 1 ¾ miles. *** Circling not authorized W of Rwy.			ALSF-1 	MISSED APPROACH: Climb to 2000, then climbing left turn to join EIC VORTAC R-143 outbound direct TEVLE (EIC 34 DME) and hold, maintain 3000.	
ATIS 307.025	SHREVEPORT APP CON 320°-152° 123.75 360.725 153°-319° 119.9 335.55	BARKSDALE TOWER 128.25 278.3	GND CON 121.8 253.5	ASR	



RADAR or DME REQUIRED
EMERG SAFE ALT 100 NM 3700



EIC VORTAC 4000	Intcp. lczr LONEC EIC 5	SUDEE /RADAR BAD 6.6 EIC 11	2000 ↑ EIC R-143	3000 TEVLE EIC 34
GS 2.50° TCH 53				
5.2 NM 6 NM				
CATEGORY	A	B	D	E
S-ILS 15*	363/24 200 (200-½)			
S-LOC 15**	640/24 477 (500-½) 640/50 477 (500-1)			
*** CIRCLING	NOT AUTHORIZED			760-2 595 (600-2) 780-2¼ 615 (700-2¼)

ILS or LOC Y RWY 15

SC-4, 03 DEC 2020 to 31 DEC 2020

SC-4, 03 DEC 2020 to 31 DEC 2020