


WAAS CH <b>97411</b> <b>W18A</b>	APP CRS <b>177°</b>	Rwy Idg <b>7981</b> TDZE <b>129</b> Apt Elev <b>131</b>
--	------------------------	---

RNAV (GPS) RWY 18L  
GREENVILLE MID-DELTA (GLH)

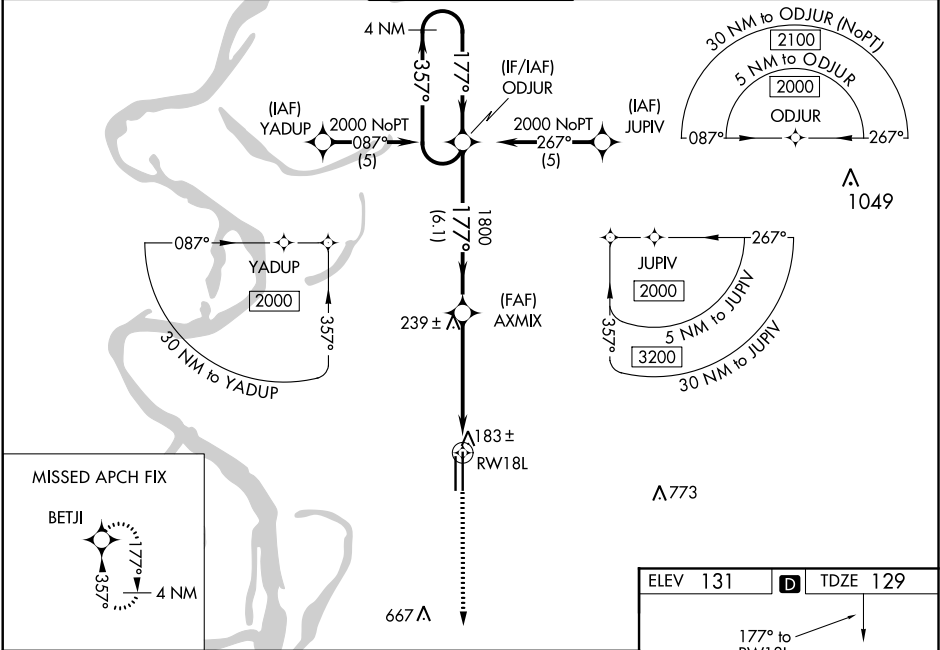
**⚠** For uncompensated Baro-VNAV systems, LNAV/VNAV NA below -15°C (5°F) or above 54°C (130°F). Inop table does not apply to LNAV Cat D. DME/DME RNP-0.3 NA. When local altimeter setting not received, use Greenwood altimeter setting and increase LPV DA to 437, LNAV/VNAV DA to 547, increase all MDA 120 feet, increase LNAV/VNAV Cats A, B, and C visibility ½ mile, Cat D visibility ¼ mile, increase LNAV Cat C visibility ¼ mile, and increase Circling Cat D visibility ¼ mile. VDP and Baro-VNAV NA when using Greenwood altimeter setting. For inop MALS, increase LNAV/VNAV visibility all Cats to RVR 5000. For inop MALS when using Greenwood altimeter setting, increase LPV visibility all Cats to RVR 5000.

MALS

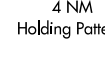


MISSED APPROACH:  
Climb to 2000 direct  
BETJI and hold.

ASOS <b>125.525</b>	MEMPHIS CENTER <b>135.875 269.35</b>	GREENVILLE TOWER* <b>119.0 (CTAF) 0 256.9</b>	GND CON <b>121.8 256.9</b>	UNICOM <b>122.95</b>
------------------------	---	--	-------------------------------	-------------------------



4 NM Holding Pattern



2000

GP 3.00° TCH 53

ODJUR

AXMIX

RW18L

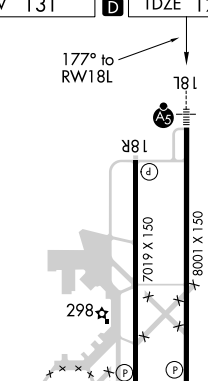
\*0.9 NM to RW18L

\* LNAV only.

CATEGORY	A	B	C	D
LPV DA	329/24 200 (200-½)			
LNAV/VNAV DA	439/24 310 (400-½)		439/40 310 (400-¾)	
LNAV MDA	460/24 331 (400-½)		460/50 331 (400-1)	
CIRCLING	600-1 469 (500-1)		700-2 569 (600-2)	

ELEV 131

TDZE 129



REIL Rwy 36R

MIRL Rwy 18R-36L

HIRL Rwy 18L-36R

SC-4, 03 DEC 2020 to 31 DEC 2020

SC-4, 03 DEC 2020 to 31 DEC 2020