

WAAS CH 77611 W36A	APP CRS 357°	Rwy Idg 7019 TDZE 130 Apt Elev 131
--	------------------------	---

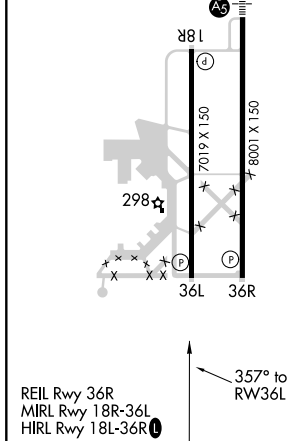
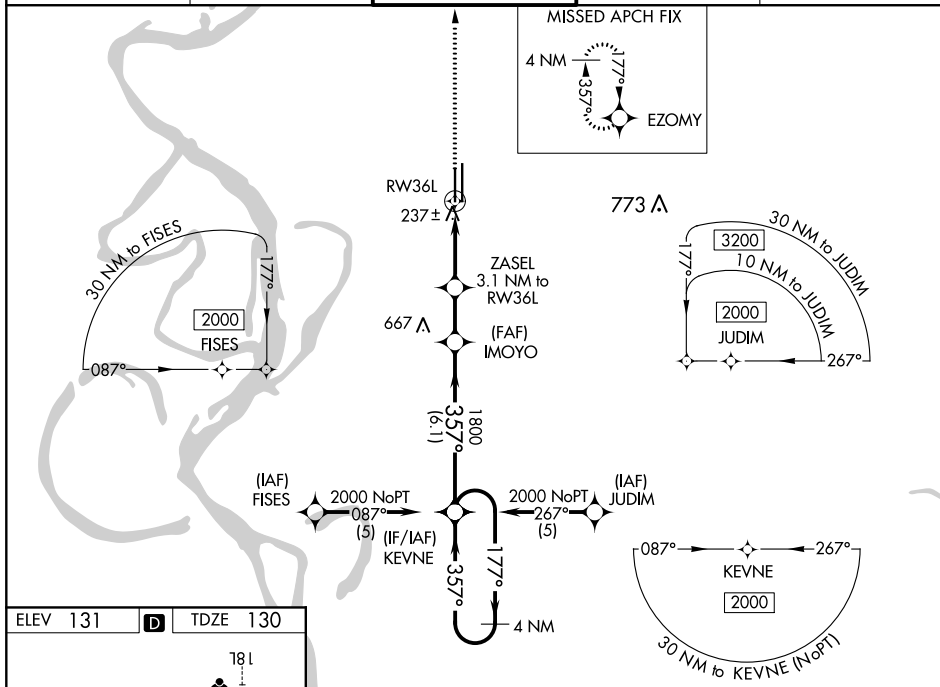
RNAV (GPS) RWY 36L

GREENVILLE MID-DELTA (GLH)

▼ For uncompensated baro-VNAV systems, LNAV/VNAV NA below -15°C (5°F) or above 54°C (130°F).
▲ DME/DME RNP-0.3 NA. When local altimeter setting not received, use Greenwood altimeter setting and increase LPV DA to 575, increase LNAV/VNAV DA to 620, increase all MDA 120 feet, increase LPV visibility all Cats ¼ mile, increase LNAV/VNAV visibility all Cats ½ mile, increase LNAV Cat C visibility ¼ mile, LNAV Cat D visibility ½ mile, and increase Circling Cat D visibility ¼ mile. VDP and Baro-VNAV NA when using Greenwood altimeter setting.

MISSED APPROACH:
Climb to 2000 direct
EZOMY and hold.

ASOS 125.525	MEMPHIS CENTER 135.875 269.35	GREENVILLE TOWER ★ 119.0 (CTAF) 0 256.9	GND CON 121.8 256.9	UNICOM 122.95
-----------------	----------------------------------	--	------------------------	------------------



VGS1 and RNAV glidepath angles not coincident
(VGS1 Angle 3.00/TCH 52).

4 NM Holding Pattern

KEVNE

177° → 2000

← 357°

ZASEL 3.1 NM to RW36L

IMOYO 1800

RW36L

*1.2 NM to RW36L

*1160

1800

GP 3.00°
TCH 40

CATEGORY	A	B	C	D
LPV DA		467-1¼	337 (400-1¼)	
LNAV/ VNAV DA		512-1¼	382 (400-1¼)	
LNAV MDA	540-1	410 (500-1)	540-1¼	410 (500-1¼)
CIRCLING	600-1	469 (500-1)	600-1½ 469 (500-1½)	700-2 569 (600-2)