

WAAS CH 97301 W14A	APP CRS 137°	Rwy Idg 9002 TDZE 27 Apt Elev 29
--	------------------------	---

RNAV (GPS) RWY 14
GULFPORT-BILOXI INTL (GPT)

T For uncompensated Baro-VNAV systems, LNAV/VNAV NA below -3°C (27°F) or above 54°C (130°F). DME/DME RNP-0.3 NA. For inoperative ALS, increase LNAV/VNAV all Cats visibility to RVR 5500.

A **RVR 1800 authorized with use of FD or AP or HUD to DA.

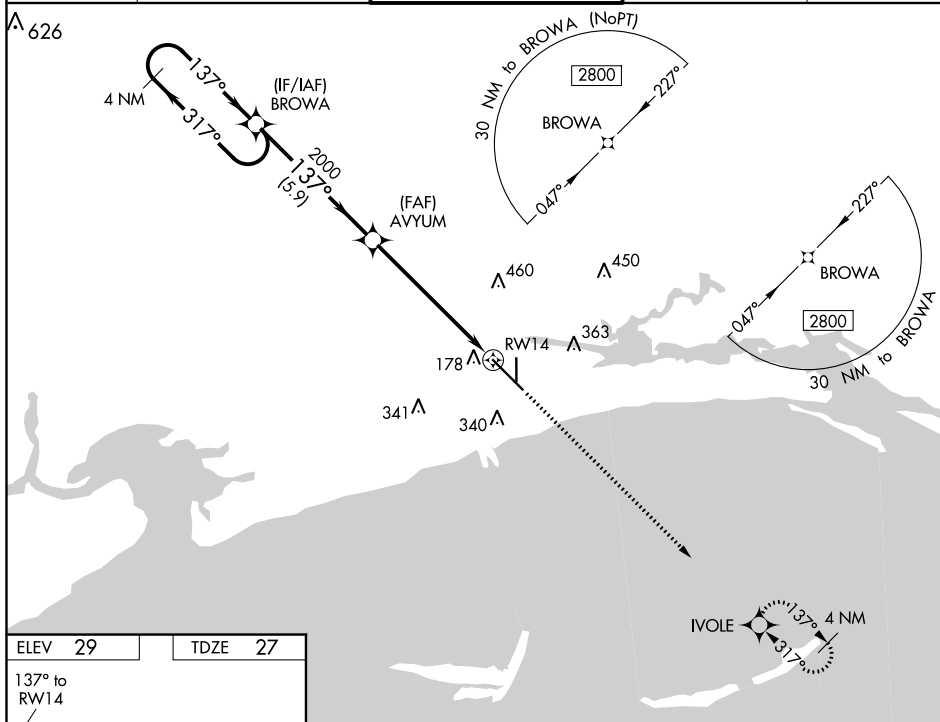
ASR

MALSR

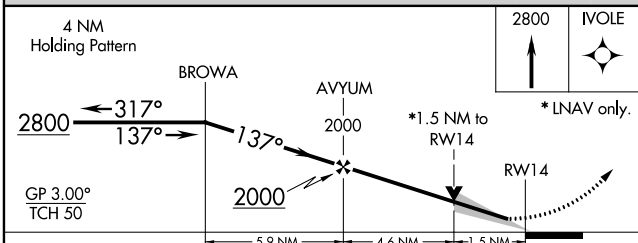
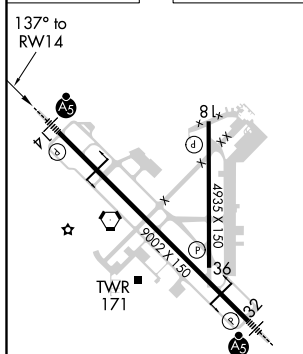



MISSED APPROACH: Climb to 2800 direct IVOLE and hold.

ATIS 119.45	GULFPORT APP CON ★ 127.5 254.25	GULFPORT TOWER ★ 123.7 (CTAF) 0 339.8	GND CON 120.4 348.6	UNICOM 122.95
-----------------------	---	---	-------------------------------	-------------------------



ELEV 29		TDZE 27
---------	--	---------



CATEGORY	A	B	C	D
LPV DA**		227/24	200 (200-½)	
INAV/ VNAV DA		404/35	377 (400-5%)	
INAV MDA	580/24	553 (600-½)	580/60	553 (600-1¼)
 CIRCLING	580-1 551 (600-1)	640-1 611 (700-1)	820-2¼ 791 (800-2¼)	820-2½ 791 (800-2½)