

APP CRS
106°

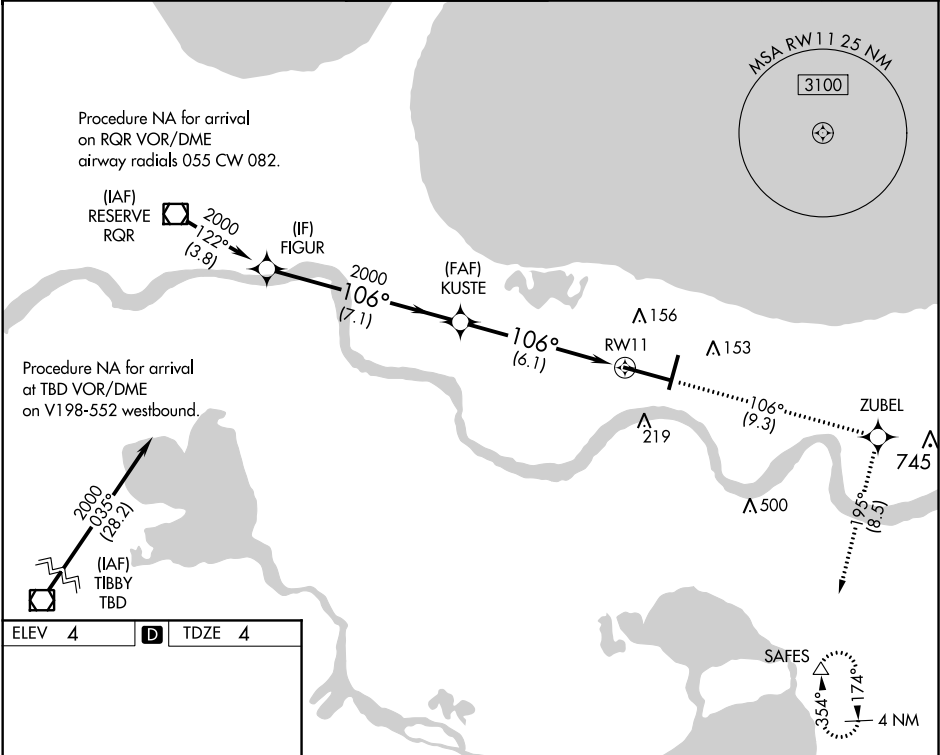
Rwy Idg
TDZE
Apt Elev

9800
4
4

RNAV (RNP) Z RWY 11

LOUIS ARMSTRONG NEW ORLEANS INTL (MSY)

For uncompensated Baro-VNAV systems, procedure NA below -1°C (31°F) or above 54°C (130°F). GPS required. For inop ALSF-2, increase RNP 0.30 all Cats visibility to RVR 6000.			ALSF-2 	MISSED APPROACH: Climb to 2000 on track 106° to ZUBEL and on track 195° to SAFES and hold.	
D-ATIS 127.55	NEW ORLEANS APP CON WEST 125.5 350.35 EAST 133.15 290.3	NEW ORLEANS TOWER 119.5 254.3	GND CON 121.9 273.525	CLNC DEL 126.575	CPDLC



ELEV 4

D

TDZE 4

106° to RW11

10104 X 150

TWR 218

HIRL All Runways

2000	↑	tr 106°	ZUBEL	tr 195°	SAFES
------	---	---------	-------	---------	-------

FIGUR

KUSTE

RW11

2000

2000

2000

GP 3.00°

TCH 55

7.1 NM

6.1 NM

CATEGORY	A	B	C	D
RNP 0.14 DA		304/24	300 (300-½)	
RNP 0.30 DA		367/40	363 (400-¾)	

AUTHORIZATION REQUIRED