

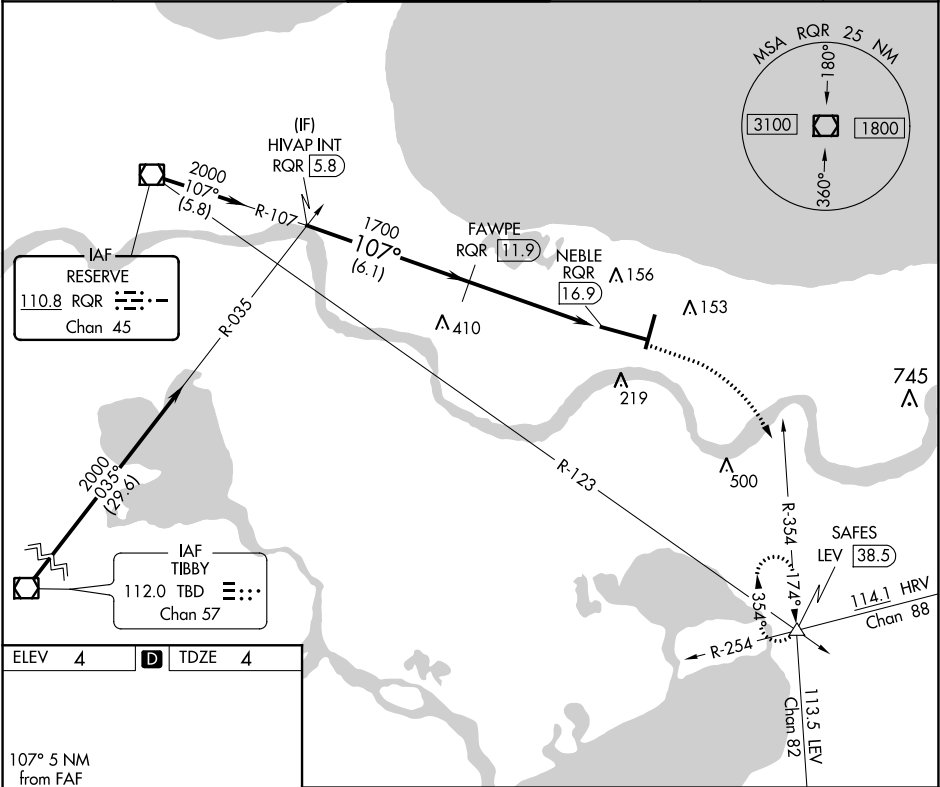
VOR/DME RQR	APP CRS	Rwy Idg	9800
110.8	107°	TDZE	4
Chan 45		Apt Elev	4

VOR/DME RWY 11

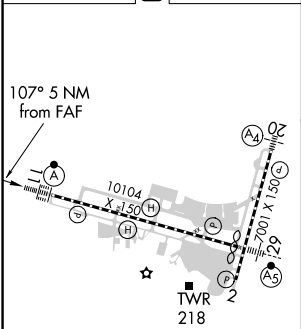
LOUIS ARMSTRONG NEW ORLEANS INTL (MSY)

	MISSED APPROACH: Climb to 800 then climbing right turn to 2000 on heading 130° and LEV VORTAC R-354 to SAFES INT/LEV 38.5 DME and hold.
--	---

D-ATIS 127.55	NEW ORLEANS APP CON WEST 125.5 350.35 EAST 133.15 290.3	NEW ORLEANS TOWER 119.5 254.3	GND CON 121.9 273.525	CLNC DEL 126.575	CPDLC
-------------------------	---	---	---------------------------------	----------------------------	-------



ELEV 4	D	TDZE 4
---------------	----------	---------------



RLLS Rwy 2
TDZ/CL Rwy 11
HIRL All Runways

VGSIs and descent angles not coincident (VGSi Angle 2.80/TCH 55).			
HIFAP INT RQR 5.8	FAWPE RQR 11.9	RQR 15.5	NEBLE RQR 16.9
2000	1700		
6.1 NM 3.7 NM 1.3 NM			
CATEGORY	A	B	C
S-11	460/24 456 (500-1/2)		
CIRCLING	520-1	516 (600-1)	580-1 1/2 576 (600-1 1/2)