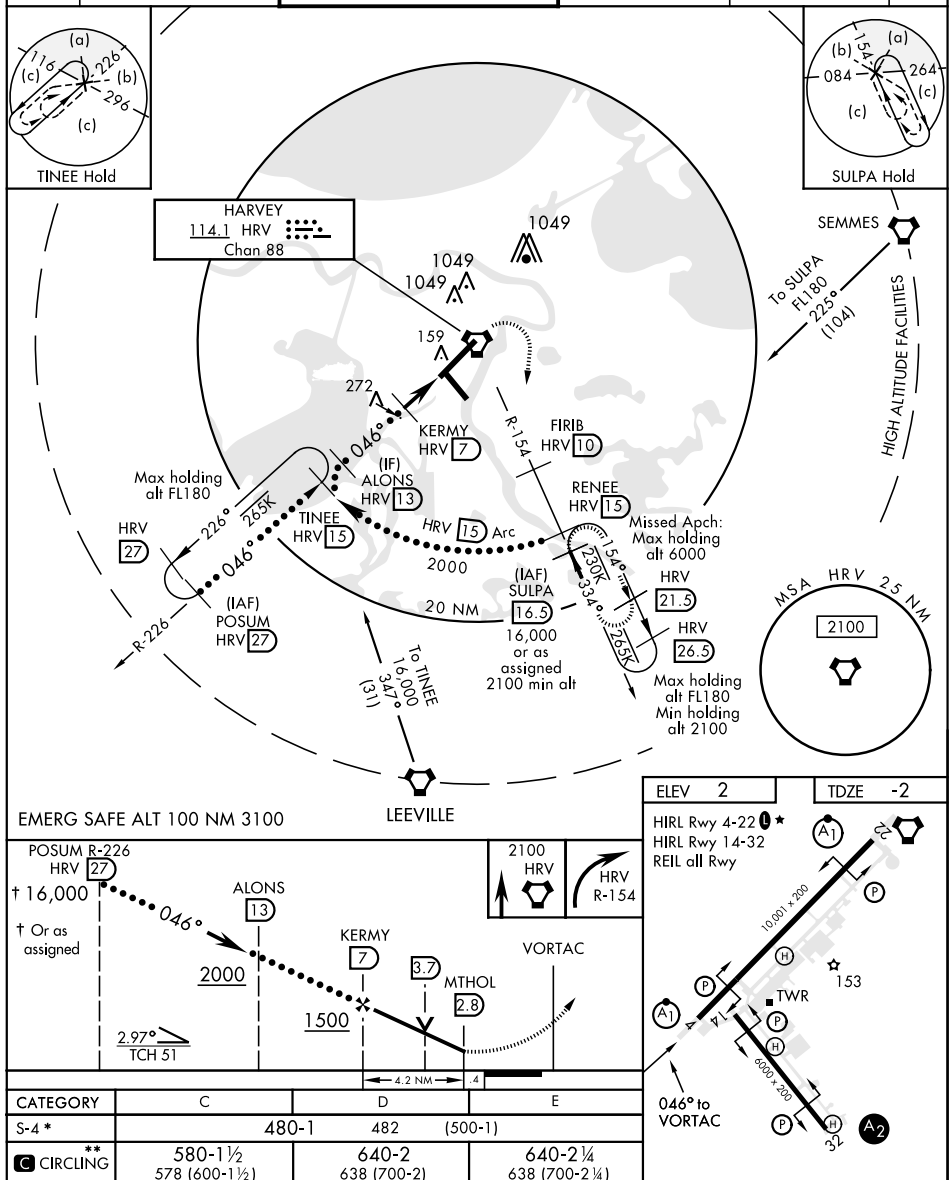


## HI-TACAN RWY 4

VORTAC HRV <b>114.1</b> Chan <b>88</b>	APCH CRS <b>046°</b>	Rwy Idg <b>10,001</b> TDZE <b>-2</b> Arpt Elev <b>2</b>	JAL-630 [USN] NEW ORLEANS NAS JRB (ALVIN CALLENDER FLD) (KNBG)
<div> <div>▼</div> <div>           * When ALS inop, increase vis CAT CDE to 1½ miles.            ** CAT E circling not authorized NW of Rwy 4-22.         </div> </div>			<div> <div>ALSF-1</div> <div> </div> </div> <div>           MISSED APPROACH: Climb direct HRV VORTAC, then climbing right turn to 2100, intercept HRV R-154 to SULPA and hold. Cross FIRB (HRV R-154/10) at 2000.         </div>
ATIS ★ <b>279.55</b>	NEW ORLEANS APP CON <b>123.85 256.9</b>	NAVY NEW ORLEANS TOWER ★ <b>0 123.8 340.2</b> (CTAF)	<div>           GND CON <b>121.6 270.35</b> </div> <div>           CLNC DEL <b>128.35 263.0</b> </div> <div>           ASR/ PAR         </div>



NEW ORLEANS, LOUISIANA

29°50'N-90°02'W

NEW ORLEANS NAS JRB (ALVIN CALLENDER FLD) (KNBG)

Amdt 2 13SEP18

# HI-TACAN RWY 4

SC-4, 03 DEC 2020 to 31 DEC 2020

SC-4, 03 DEC 2020 to 31 DEC 2020