

NEW ORLEANS, LOUISIANA

ILS or LOC/DME RWY 4

LOC I-NBG 109.5	APCH CRS 044°	Rwy ldg 10,001 TDZE -2 Arprt Elev 2
---------------------------	-------------------------	----------------------------------------------------------------

AL-630 [USN]

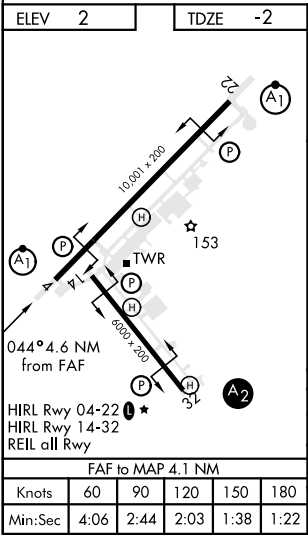
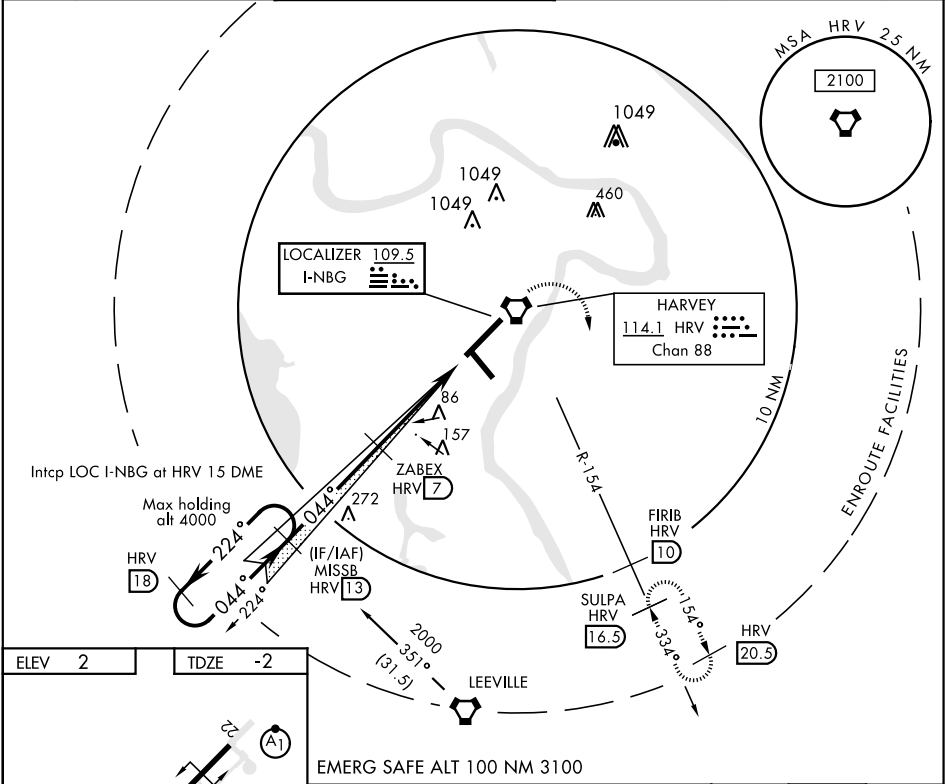
NEW ORLEANS NAS JRB
(ALVIN CALLENDER FLD) (KNBG)

⚠ * When ALS inop, increase vis CAT ABCDE to ¾ mile.
** When ALS inop, increase vis CAT AB to 1 mile;
CAT CDE to 1½ miles.
*** CAT E circling not authorized NW of Rwy 4-22.



MISSED APPROACH: Climb to 2100 direct HRV
VORTAC then climbing right turn intercept HRV R-154
to SULPA and hold. Cross FIRB at 2000.

ATIS ★ 279.55	NEW ORLEANS APP CON 123.85 256.9	NAVY NEW ORLEANS TOWER ★ 0 123.8 340.2 (CTAF)	GND CON 121.6 270.35	CLNC DEL 128.35 263.0	ASR/ PAR
-------------------------	--------------------------------------------	---------------------------------------------------------	--------------------------------	---------------------------------	-------------



EMERG SAFE ALT 100 NM 3100				
CATEGORY	A	B	C	D
S-ILS 4 *	198-½		200	(200-½)
S-LOC 4 **	400-½ 402 (400-½)		400-¾ 402 (400-¾)	
*** CIRCLING	580-1 578 (600-1)		580-1½ 578 (600-1½)	640-2¼ 638 (700-2¼)

NEW ORLEANS, LOUISIANA

29°50'N-90°02'W

NEW ORLEANS NAS JRB
(ALVIN CALLENDER FLD) (KNBG)

ILS or LOC/DME RWY 4

Amtd 2 13SEP18

SC-4, 03 DEC 2020 to 31 DEC 2020

SC-4, 03 DEC 2020 to 31 DEC 2020