

NEW ORLEANS, LOUISIANA

RNAV (GPS) RWY 14

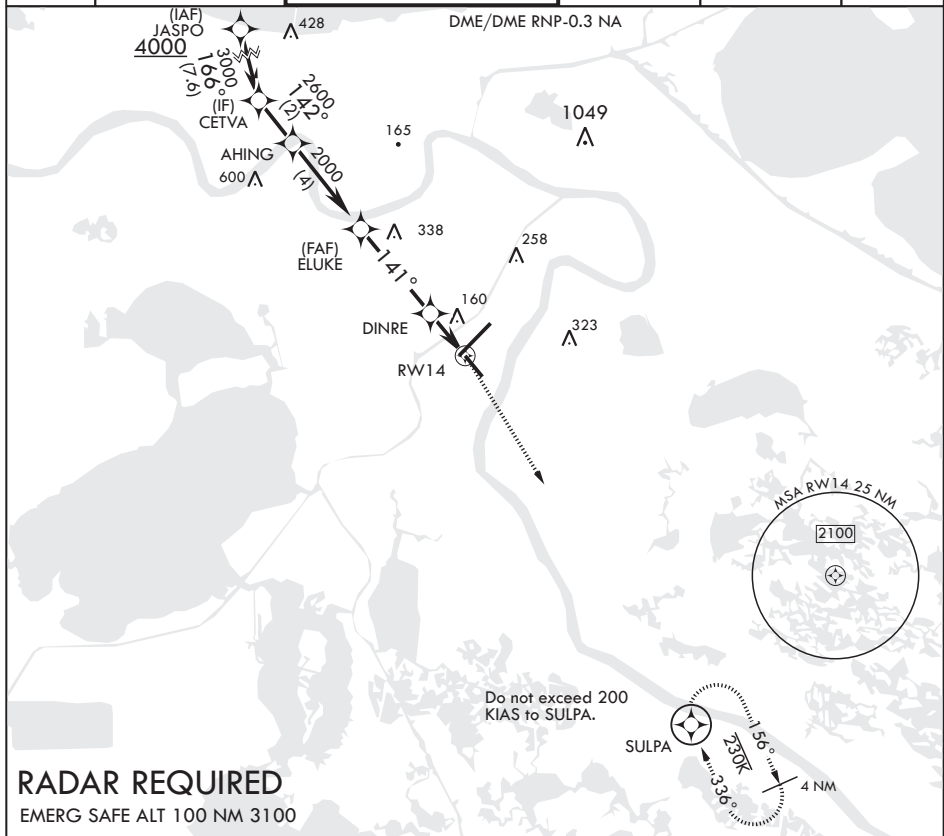
AL-630 (USN)

NEW ORLEANS NAS JRB (ALVIN CALLENDER FLD) (KNBG)

APCH CRS 141°	Rwy Idg TDZE Arpt Elev	6000 2 2
------------------	------------------------------	----------------

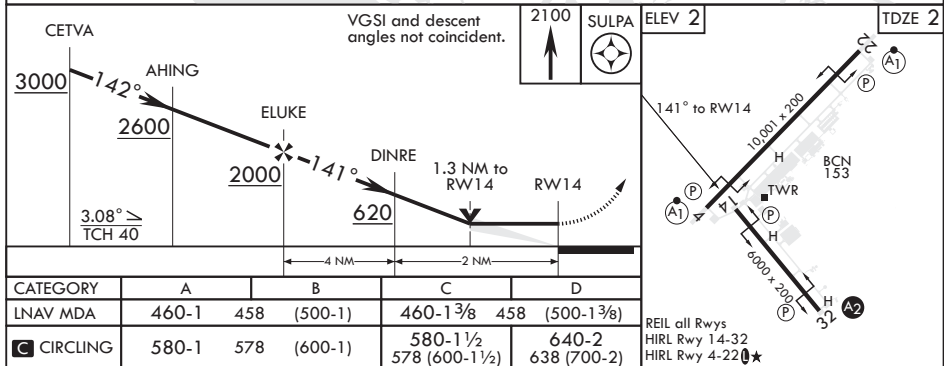
MISSED APPROACH: Climb to 2100 direct SULPA and hold.

ATIS★ 279.55	APP CON/DEP CON 123.85 256.9	NAVY NEW ORLEANS TOWER★ 123.8 0★ 340.2 (CTAF)	GND CON 121.6 270.35	CLNC DEL 128.35 263.0	ASR/PAR
-----------------	---------------------------------	--	-------------------------	--------------------------	---------



RADAR REQUIRED

EMERG SAFE ALT 100 NM 3100



NEW ORLEANS, LOUISIANA

29°50'N - 90°02'W NEW ORLEANS NAS JRB (ALVIN CALLENDER FLD) (KNBG)

Amdt 1 13SEP18

RNAV (GPS) RWY 14

SC-4, 03 DEC 2020 to 31 DEC 2020

SC-4, 03 DEC 2020 to 31 DEC 2020