

NEW ORLEANS, LOUISIANA

## RNAV (GPS) RWY 32

AL-630 (USN)

NEW ORLEANS NAS JRB (ALVIN CALLENDER FLD) (KNBG)

APCH CRS <b>321°</b>	Rwy Idg <b>6000</b>
	TDZE <b>2</b>
	Arpt Elev <b>2</b>

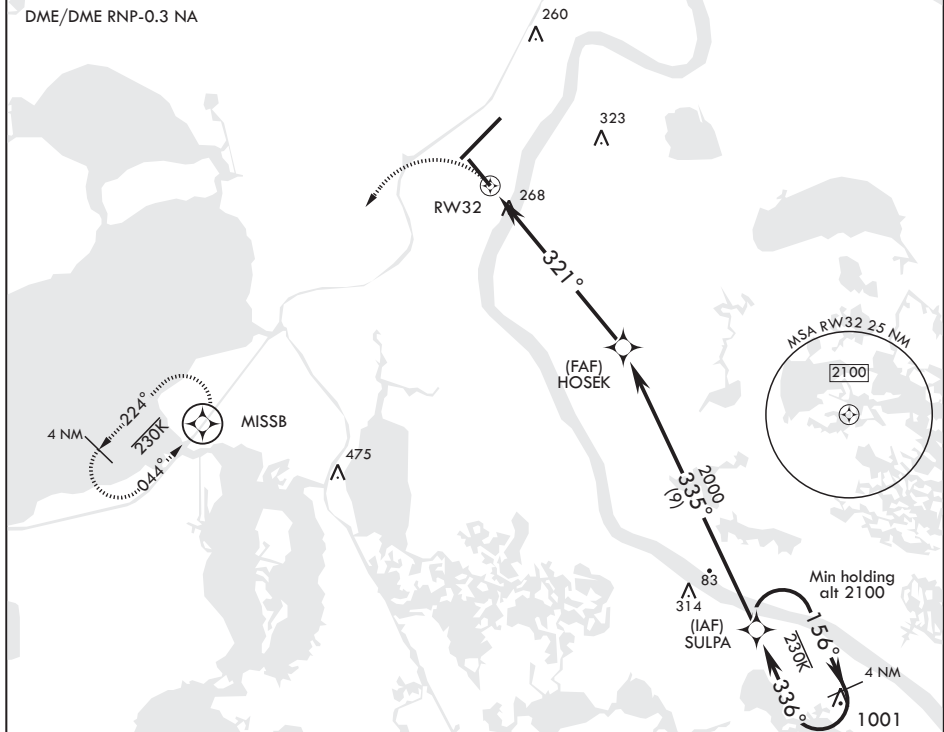
**T** \* When ALS inop, increase CAT CD vis to 1 5/8 miles.



**MISSED APPROACH:** Climbing left turn to 2000 direct MISSB and hold, do not exceed 250 KIAS until turn completion.

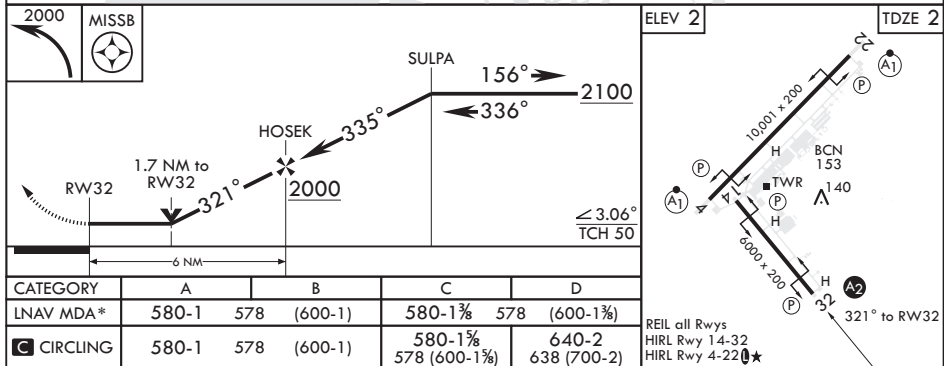
ATIS★ 279.55	APP CON/DEP CON 123.85 256.9	NAVY NEW ORLEANS TOWER★ 123.8 0★ 340.2 (CTAF)	GND CON 121.6 270.35	CLNC DEL 128.35 263.0	ASR/PAR
-----------------	---------------------------------	--	-------------------------	--------------------------	---------

DME/DME RNP-0.3 NA



## RADAR REQUIRED

EMERG SAFE ALT 100 NM 3100



NEW ORLEANS, LOUISIANA

29°50'N - 90°02'W NEW ORLEANS NAS JRB (ALVIN CALLENDER FLD) (KNBG)

Amdt 2 15AUG19

## RNAV (GPS) RWY 32

SC-4, 03 DEC 2020 to 31 DEC 2020

SC-4, 03 DEC 2020 to 31 DEC 2020