

## VOR/DME or TACAN RWY 4

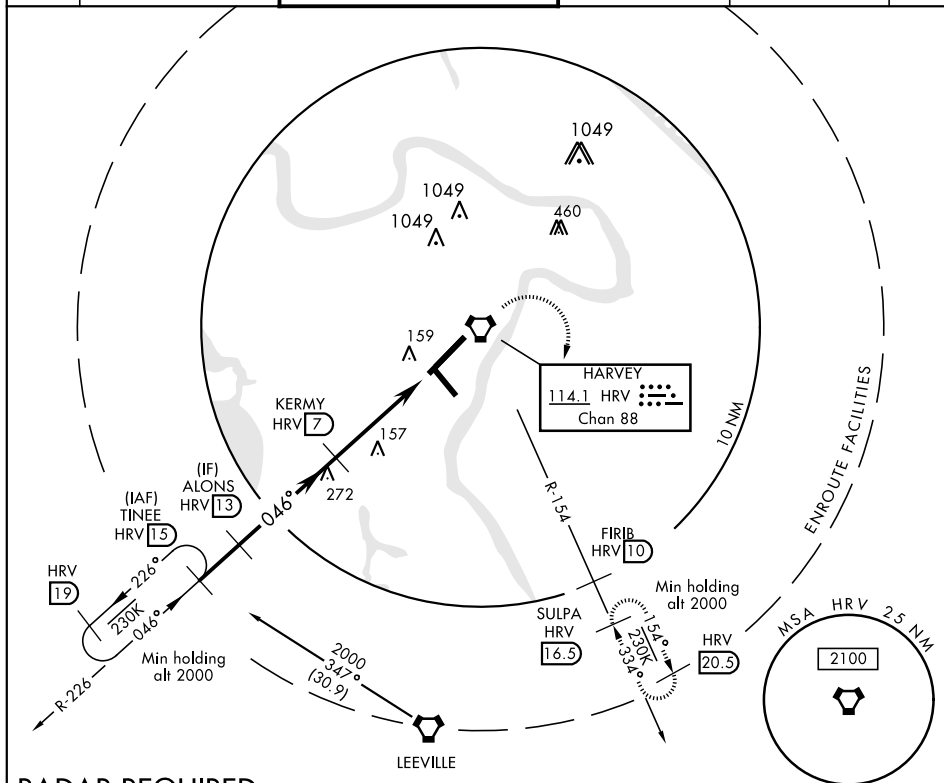
VORTAC HRV <b>114.1</b> Chan <b>88</b>	APCH CRS <b>046°</b>	Rwy ldg TDZE Arprt Elev	<b>10,001</b> <b>-2</b> <b>2</b>
--	-------------------------	-------------------------------	--

AL-630 [USN]

NEW ORLEANS NAS JRB  
(ALVIN CALLENDER FLD) (KNBG)

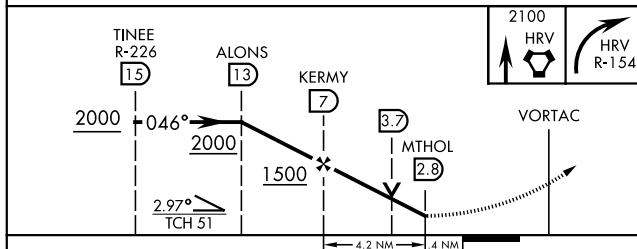
<p><b>V</b> * When ALS inop, increase vis CAT AB to 1 mile, CAT CD to 1½ miles.</p>	<p>ALSF-1 <b>(A1)</b></p>	<p>MISSED APPROACH: Climb direct HRV VORTAC, then climbing right turn to 2100, intercept HRV R-154 to SULPA and hold. Cross FIRB (HRV R-154/10) at 2000.</p>
---	-------------------------------	--

ATIS ★ <b>279.55</b>	NEW ORLEANS APP CON <b>123.85 256.9</b>	NAVY NEW ORLEANS TOWER ★ <b>0 123.8 340.2</b> (CTAF)	GND CON <b>121.6 270.35</b>	CLNC DEL <b>128.35 263.0</b>	ASR/ PAR
-------------------------	--	---	--------------------------------	---------------------------------	-------------

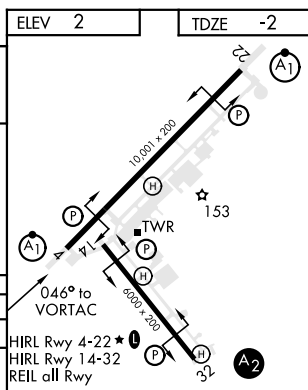


## RADAR REQUIRED

EMERG SAFE ALT 100 NM 3100



CATEGORY	A	B	C	D
S-4 *	480-½	482 (500-½)	480-1	482 (500-1)
CIRCLING	580-1	578 (600-1)	580-1½ 578 (600-1½)	640-2 638 (700-2)



NEW ORLEANS, LOUISIANA

29° 50' N-90° 02' W

NEW ORLEANS NAS JRB  
(ALVIN CALLENDER FLD)

Amdt 2 13SEP18

## VOR/DME or TACAN RWY 4