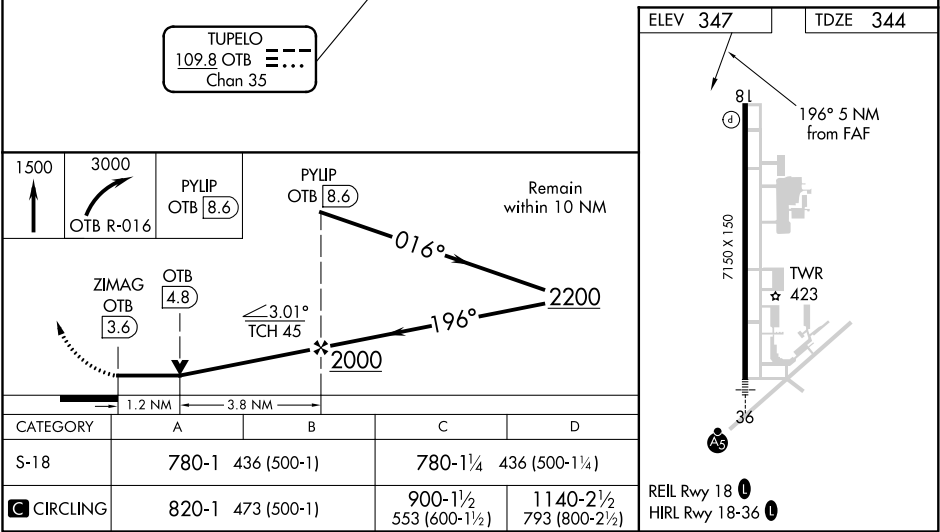
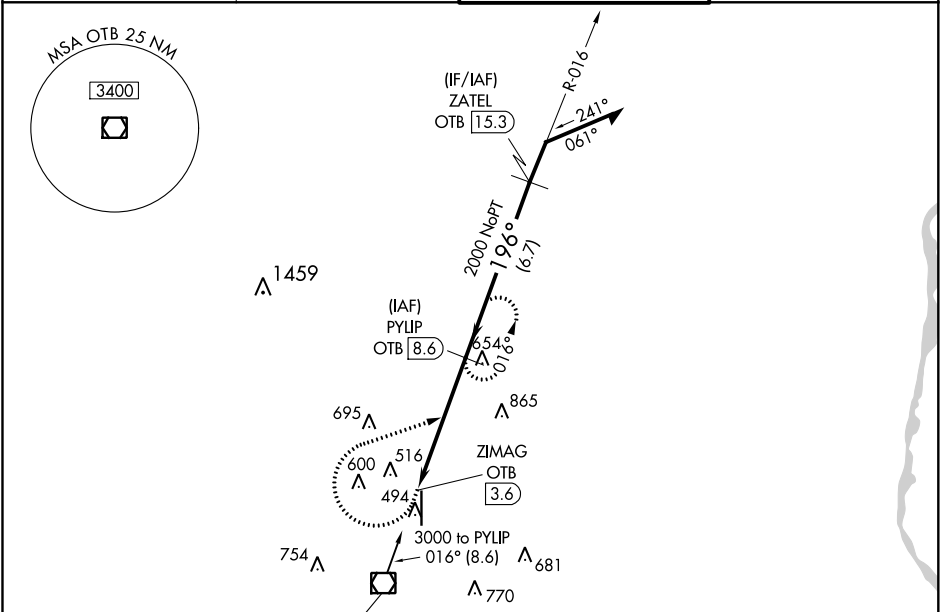


VOR/DME OTB	APP CRS	Rwy ldg	7150
109.8	196°	TDZE	344
Chan 35		Apt Elev	347

VOR RWY 18  
TUPELO RGNL (TUP)

RADAR required for procedure entry. DME required.		MISSED APPROACH: Climb to 1500 then climbing right turn to 3000 on OTB VOR/DME R-016 to PYLIP/OTB 8.6 DME and hold.
<div><div>T</div><div>A</div></div>	When local altimeter setting not received, use Columbus AFB altimeter setting and increase all MDA 120 feet. Increase S-18 Cat C/D visibility $\frac{3}{4}$ SM; increase Circling Cat C/D visibility $\frac{1}{2}$ SM. VDP NA when using Columbus AFB altimeter setting.	

ASOS 133,525	MEMPHIS CENTER 128.5 279.55	TUPELO TOWER ★ 118.775 (CTAF) 0 254.275	GND CON 121.825 254,275
-----------------	--------------------------------	--	----------------------------



SC-4, 03 DEC 2020 to 31 DEC 2020

SC-4, 03 DEC 2020 to 31 DEC 2020