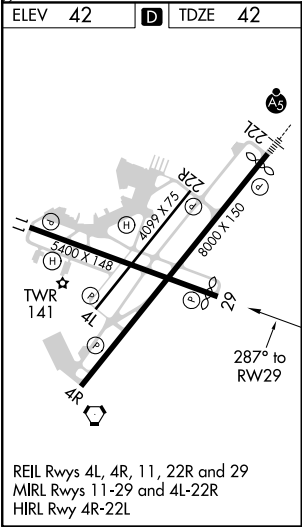
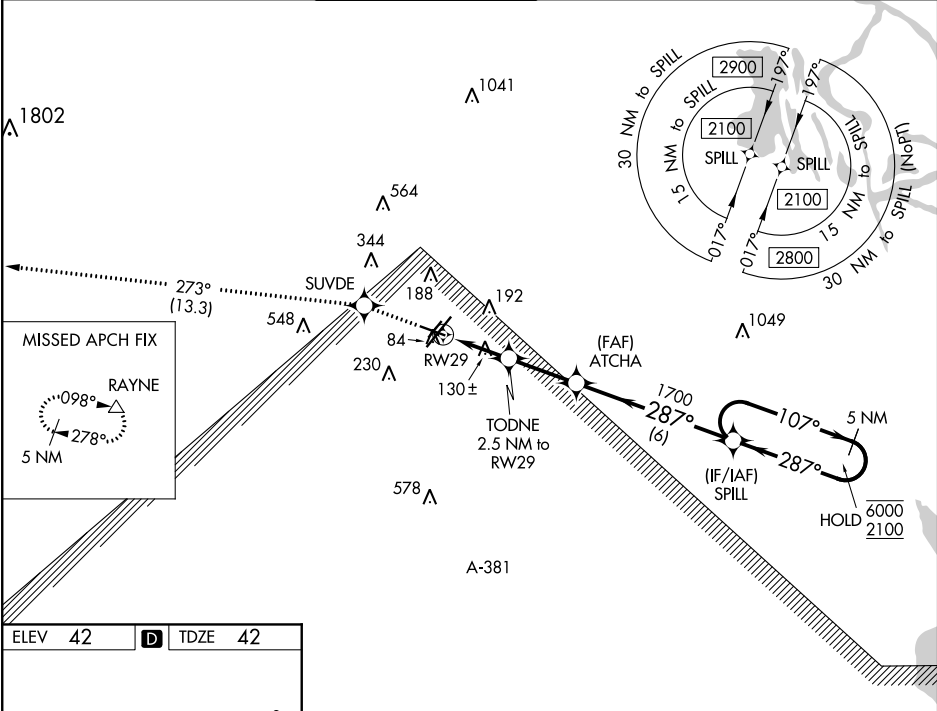


WAAS CH 45703 W29A	APP CRS 287°	Rwy Idg 5150 TDZE 42 Apt Elev 42
--	------------------------	---

RNAV (GPS) RWY 29
LAFAYETTE RGNL/PAUL FOURNET FIELD (LFTT)

RNP APCH.			MISSED APPROACH: Climb to 2800 direct SUVDE and on track 273° to RAYNE and hold.		
Rwy 29 helicopter visibility reduction below ¾ SM NA. For uncompensated Baro-VNAV systems, LNAV/VNAV NA below -2°C or above 54°C.					
ATIS 134.05	LAFAYETTE APP CON ★ 121.1 363.0	LAFAYETTE TOWER ★ 118.5 (CTAF) 0 257.8	GND CON 121.8	CLNC DEL 125.55	UNICOM 122.95



2800 ↑	SUVDE ✱	tr 273°	RAYNE △				
*LNAV only.				5 NM Holding Pattern			
TODNE 2.5 NM to RW29				ATCHA 1700			
*0.9 NM to RW29				287°			
RW29				1700			
*880				GP 3.00° TCH 51			
0.9 1.6 2.6 NM 6 NM				SPILL			
CATEGORY				A	B	C	D
LPV DA				292-¾	250 (300-¾)		
LNAV/VNAV DA				292-¾	250 (300-¾)		
LNAV MDA				380-1	338 (400-1)		
CIRCLING		500-1 458 (500-1)		580-1 538 (600-1)	700-1¾ 658 (700-1¾)		700-2 658 (700-2)