


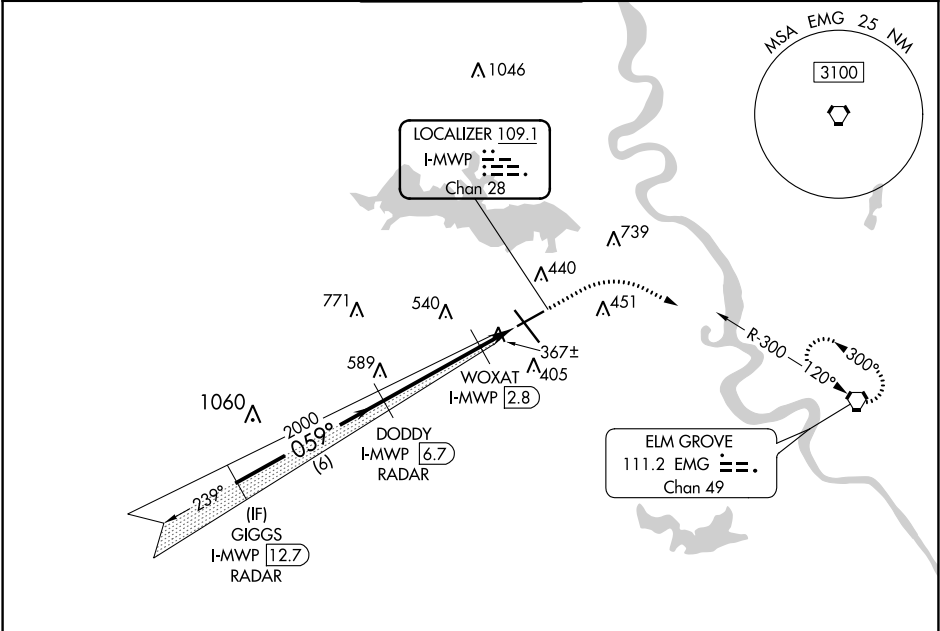
| | | | |
|----------------|-------------|----------|------------|
| LOC/DME I-MWP | APP CRS | Rwy Idg | 6202 |
| 109.1 | 059° | TDZE | 238 |
| Chan 28 | | Apt Elev | 258 |

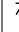


LOC RWY 6

SHREVEPORT RGNL (SHV)

| | | |
|--|--|--|
| RADAR required for procedure entry. RADAR or DME required. | | MISSED APPROACH: Climb to 700 then climbing right turn to 2000 direct EMG VORTAC and hold. |
|  Rwy 6 helicopter visibility reduction below 3/4 SM NA. | | |

| | | | | |
|-----------------------|---|--|-----------------------------------|---------------------------|
| ATIS 128.45 | SHREVEPORT APP CON 119.9 335.55 | SHREVEPORT TOWER 121.4 236.775 | GND CON 121.175 236.775 | CLNC DEL 124.65 |
|-----------------------|---|--|-----------------------------------|---------------------------|



| | | | |
|---|--|---|--|
| ELEV 258 | | TDZE 238 | |
|  | |  | |
|  | | | |
| GIGGS I-MWP 12.7 RADAR | | DODDY I-MWP 6.7 RADAR | |
| 2000 | | 2000 | |
| 059° | | 059° | |
| 6 NM | | 4 NM | |
| WOXAT I-MWP 2.8 | | I-MWP 1.4 | |
| 740 | | 1.4 | |
| CATEGORY | | A | |
| S-LOC 6 | | 740-1 502 (500-1) | |
| CIRCLING | | 760-1 502 (600-1) | |
| WOXAT FIX MINIMUMS | | | |
| S-LOC 6 | | 620-1 382 (400-1) | |
| CIRCLING | | 760-1 502 (600-1) | |
| | | 980-2 722 (800-2) | |
| | | 1100-2 842 (900-2 3/4) | |
| | | 1100-3 842 (900-3) | |
| | | 740-1 3/4 502 (500-1 3/4) | |
| | | 980-2 722 (800-2) | |
| | | 1100-2 842 (900-2 3/4) | |
| | | 1100-3 842 (900-3) | |

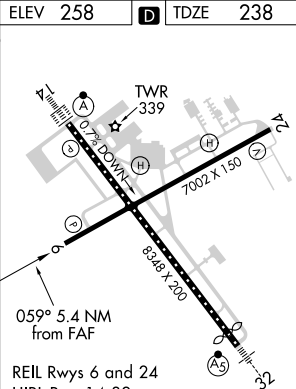


Diagram illustrating the approach path for LOC RWY 6, showing various navigational aids, altitudes, and distances.

Key features include:

- ELMO GROVE VORTAC 111.2 EMG Chan 49
- Altitudes: 700, 2000, EMG
- Distances: 059° 5.4 NM from FAF, 7002 X 150, 8348 X 200
- Radar: GIGGS I-MWP 12.7, DODDY I-MWP 6.7, WOXAT I-MWP 2.8

| | | | |
|--------------------|--|---------------------------|--|
| ELEV 258 | | TDZE 238 | |
| CATEGORY | | A | |
| S-LOC 6 | | 740-1 502 (500-1) | |
| CIRCLING | | 760-1 502 (600-1) | |
| WOXAT FIX MINIMUMS | | | |
| S-LOC 6 | | 620-1 382 (400-1) | |
| CIRCLING | | 760-1 502 (600-1) | |
| | | 980-2 722 (800-2) | |
| | | 1100-2 842 (900-2 3/4) | |
| | | 1100-3 842 (900-3) | |
| | | 740-1 3/4 502 (500-1 3/4) | |
| | | 980-2 722 (800-2) | |
| | | 1100-2 842 (900-2 3/4) | |
| | | 1100-3 842 (900-3) | |

REIL Rwy 6 and 24

HIRL Rwy 14-32

MIRL Rwy 6-24

TDZ/CL Rwy 14

FAF to MAP 5.4 NM

| | | | | | |
|---------|------|------|------|------|------|
| Knots | 60 | 90 | 120 | 150 | 180 |
| Min:Sec | 5:24 | 3:36 | 2:42 | 2:10 | 1:48 |