

WAAS CH <b>45913</b> <b>W14A</b>	APP CRS <b>141°</b>	Rwy Idg TDZE <b>258</b> Apt Elev <b>258</b>
--	------------------------	---

RNAV (GPS) RWY 14  
SHREVEPORT RGNL (SHV)

RNP APCH

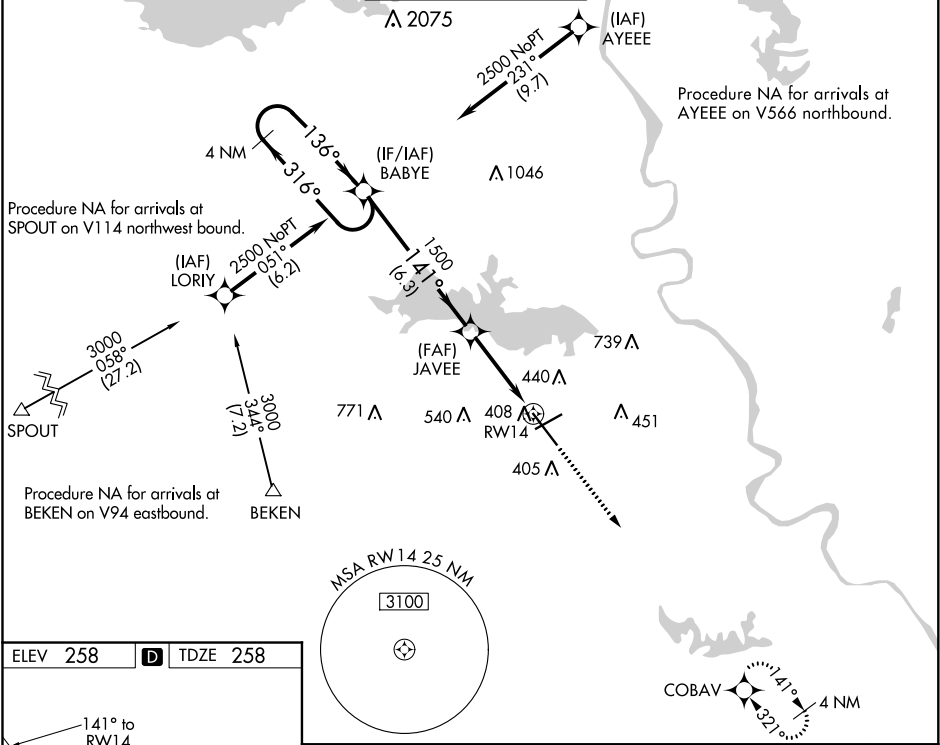
**ASR**

For inop ALS, increase LNAV Cat C and D visibility to RVR 6000.  
For uncompensated Baro-VNAV systems, LNAV/VNAV NA below -6°C or above 54°C.

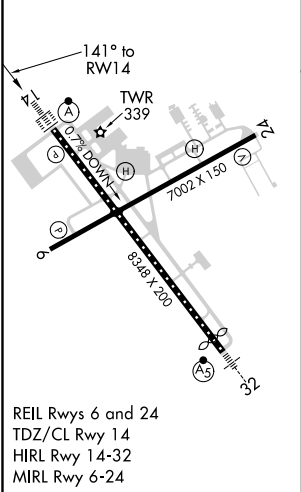
ALSIF-2

**MISSED APPROACH:** Climb to 3000 direct COBAV and hold.

ATIS <b>128.45</b>	SHREVEPORT APP CON <b>119.9 335.55</b>	SHREVEPORT TOWER <b>121.4 236.775</b>	GND CON <b>121.175 236.775</b>	CLNC DEL <b>124.65</b>
-----------------------	---	--	-----------------------------------	---------------------------



ELEV <b>258</b>	<b>D</b>	TDZE <b>258</b>
-----------------	----------	-----------------



REIL Rws 6 and 24  
TDZ/CL Rwy 14  
HIRL Rwy 14-32  
MIRL Rwy 6-24

4 NM Holding Pattern BABYE

2500 ← 316° → 136° → 141° → 1500

GP 3.00° TCH 51

6.3 NM 2.6 NM 1.1 NM

JAVEE 1500

\*1.1 NM to RWY 14

\*LNAV only.

CATEGORY	A	B	C	D
LPV DA		458/18	200 (200-½)	
LNAV/VNAV DA		640/40	382 (400-¾)	
LNAV MDA	660/24	402 (500-½)	660/40	402 (500-¾)
<b>CIRCLING</b>	760-1	502 (600-1)	980-2 722 (800-2)	1100-2¾ 842 (900-2¾)

SC-4, 03 DEC 2020 to 31 DEC 2020

SC-4, 03 DEC 2020 to 31 DEC 2020