

WAAS CH 77734 W36A	APP CRS 001°	Rwy Idg TDZE Apt Elev	5000 272 272
--	------------------------	-----------------------------	---

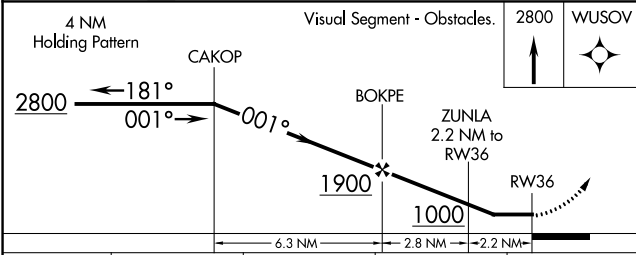
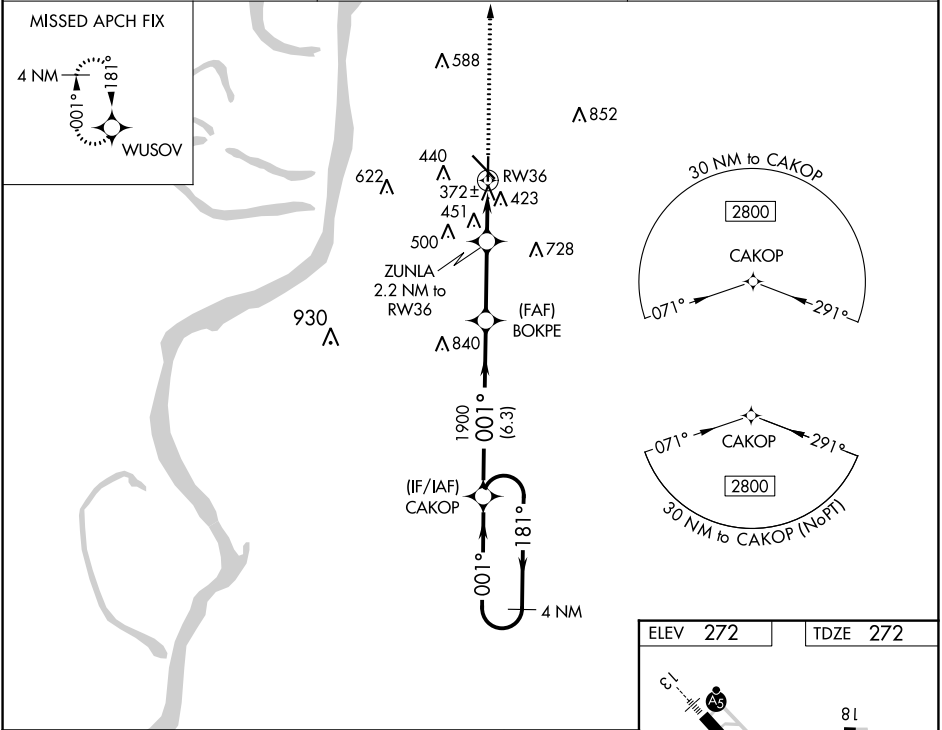
RNAV (GPS) RWY 36
HARDY-ANDERS FIELD NATCHEZ-ADAMS COUNTY (HE/Z)

RNP APCH

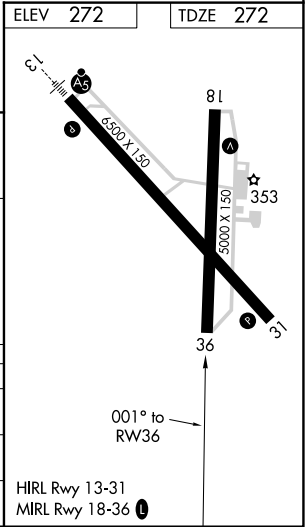
When local altimeter setting not received, use Vicksburg Tallulah Rgnl altimeter setting and increase all MDAs 140 feet; increase LP and LNAV Cats C/D visibility 3/8 SM. Increase Circling Cats C visibility 1/2 SM. Rwy 36 helicopter visibility reduction below 1 SM NA. Straight-in Rwy 36 NA at night, Circling Rwy 36 NA at night.

MISSED APPROACH: Climb to 2800 direct WUSOV and hold.

AWOS-3PT 124.675	HOUSTON CENTER 120.975 299.6	UNICOM 122.8 (CTAF) 0
----------------------------	--	--



CATEGORY	A	B	C	D
LP MDA	660-1	388 (400-1)	660-1 3/8	388 (400-1 1/8)
LNAV MDA	720-1	488 (500-1)	720-1 3/8	488 (500-1 3/8)
CIRCLING	740-1 468 (500-1)	800-1 528 (600-1)	1020-2 1/4 748 (800-2 1/4)	1220-3 948 (1000-3)



SC-4, 03 DEC 2020 to 31 DEC 2020

SC-4, 03 DEC 2020 to 31 DEC 2020