

WAAS
CH **40301**
W35A

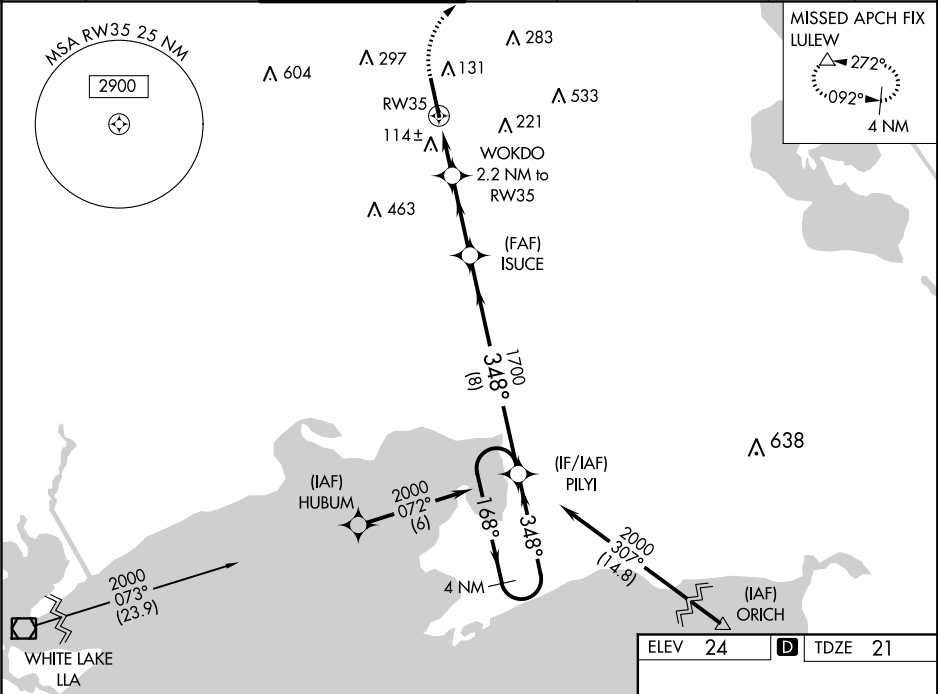
APP CRS
348°

Rwy Idg
TDZE **21**
Apt Elev **24**

RNAV (GPS) RWY 35

ACADIANA RGNL (A.R.A.)

RNP APCH.					MALSR	MISSED APPROACH: Climb to 440 then climbing right turn to 2000 direct LULEW and hold.		
▼ For uncompensated Baro-VNAV systems, LNAV/VNAV NA below -3°C or above 54°C. For inop ALS, increase LNAV/VNAV all Cats visibility to ½ SM and LNAV Cats C/D visibility to 1 SM. Circling NA to Rwys 17W and 35W.								
ASOS	LAFAYETTE APP CON★	ACADIANA TOWER★	GND CON	CLNC DEL	CLNC DEL	UNICOM	★	
133.325	121.1 268.7	125.0 (CTAF) 0 239.3	121.7	121.7	118.05 (when twr closed)	122.95	122.7	



440	2000	LULEW	VGSI and RNAV glidepath not coincident (VGSI Angle 3.00/TCH 52).		4 NM Holding Pattern
*LNAV only.		ISUCE	WOKDO 2.2 NM to RW35	1700	168° → 2000
RW35		760*	1700	348°	GP 3.00° TCH 52
1 NM		1.2 NM	2.9 NM	8 NM	
CATEGORY	A	B	C	D	
LPV DA	221-½		200 (200-½)		
LNAV/DA	303-½		282 (300-½)		
LNAV MDA	380-½		359 (400-½)		
CIRCLING	440-1		480-1		
	416 (500-1)		456 (500-1)		
CIRCLING	600-1½		680-2		
	576 (600-1½)		656 (700-2)		

