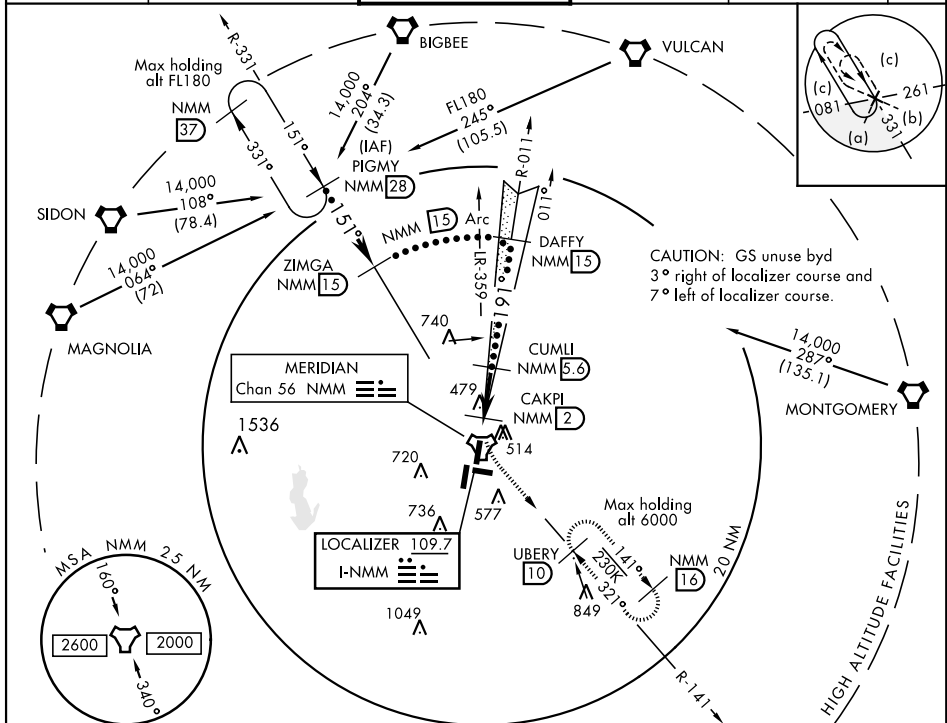


LOC I-NMM 109.7	APCH CRS 191°	Rwy Idg TDZE Arpt Elev 8001 316 316	JAL-5079 [USN]	MERIDIAN NAS (MC CAIN FIELD) (KNMM)
---------------------------	-------------------------	---	----------------	-------------------------------------

<p>▼ *When ALS inop, increase CAT CDE vis to $\frac{3}{4}$ mile. **When ALS inop, increase CAT CDE vis to $1\frac{1}{8}$ miles.</p>	<p>MALSR (A5)</p>	<p>MISSED APPROACH: Climb to 800 then climbing left turn to 2100 intercept NMM R-141 to UBERY and hold.</p>
---	-----------------------	---

ATIS ★ 290.525	MERIDIAN APP CON 120.95 276.4	NAVY MC CAIN TOWER ★ 126.2 340.2	GND CON 336.4	CLNC DEL 301.0	ASR/ PAR
--------------------------	---	--	-------------------------	--------------------------	-------------



EMERG SAFE ALT 100 NM 3700			ELEV 316		TDZE 316	
800	2100	UBERY	ZIMGA	PIGMY		
NMM R-141	NMM R-331	NMM R-331	NMM R-331	NMM R-331		
TACAN	FAXAR	CAKPI	CUMLI	DAFY		
0.7	1.2	2	5.6	15		
940	2100	4000	6000	14,000		
GS 3.00°	TCH 49					
CATEGORY C			D		E	
S-ILS 19L *			516- $\frac{1}{2}$		200 (200- $\frac{1}{2}$)	
S-LOC 19L**			700- $\frac{5}{8}$		384 (400- $\frac{5}{8}$)	
CIRCLING			840-1 $\frac{1}{2}$		1080-2 $\frac{3}{4}$	
			524 (600-1 $\frac{1}{2}$)		764 (800-2 $\frac{3}{4}$)	