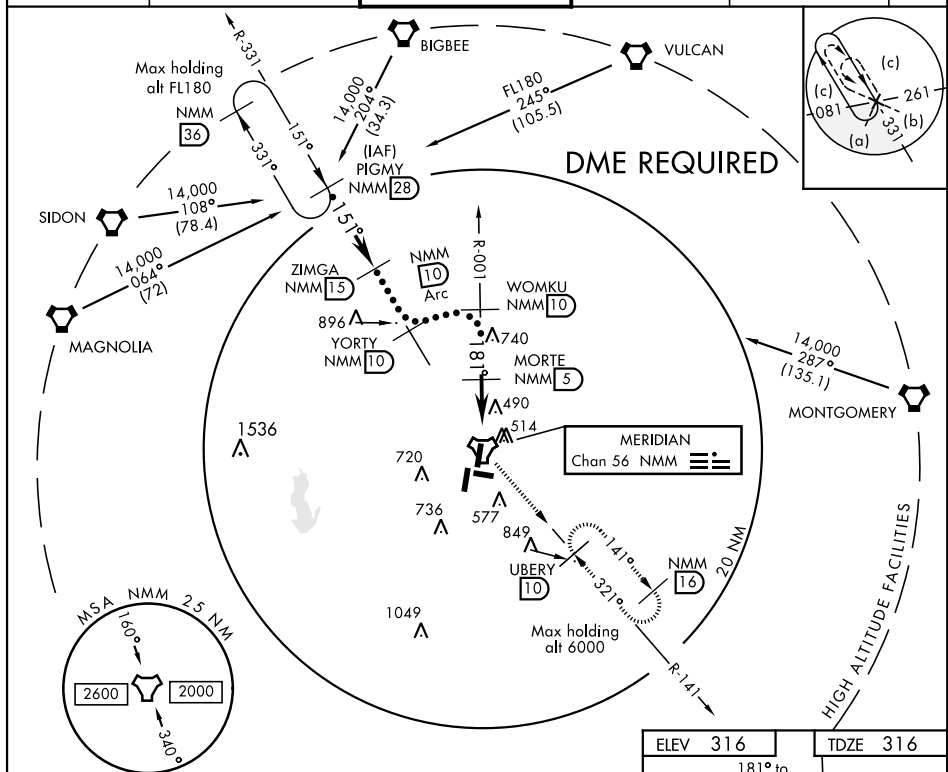


HI-TACAN RWY 19L

TACAN Chan 56	NMM	APCH CRS 181°	Rwy Idg 8001 TDZE 316 Arpt Elev 316	JAL-5079 [USN]	MERIDIAN NAS (MC CAIN FIELD) (KNMM)
-------------------------	-----	-------------------------	--	----------------	-------------------------------------

▼ * When ALS inop, increase CAT CDE vis to 1 $\frac{3}{8}$ miles.

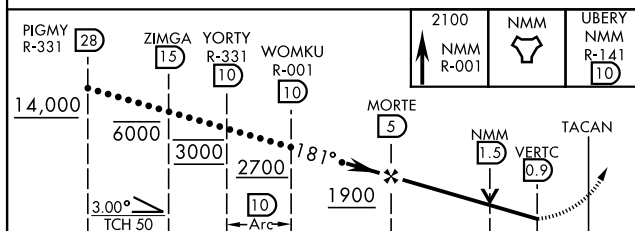
ATIS ★ 290.525	MERIDIAN APP CON 120.95 276.4	NAVY MC CAIN TOWER ★ 126.2 340.2	GND CON 336.4	CLNC DEL 301.0	ASR/ PAR
-------------------	----------------------------------	-------------------------------------	------------------	-------------------	-------------



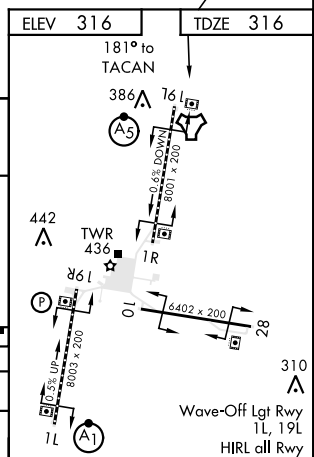
SC-4, 03 DEC 2020 to 31 DEC 2020

SC-4, 03 DEC 2020 to 31 DEC 2020

EMERG SAFE ALT 100 NM 3700



CATEGORY	C	D	E
S-19L *	800-1	484	(500-1)
CIRCLING	840-1½ 524 (600-1½)	880-2 564 (600-2)	1080-2¾ 764 (800-2¾)



HI-TACAN RWY 19L