

## ILS or LOC/DME RWY 19L

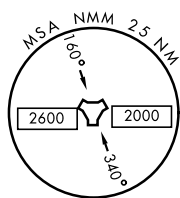
LOC I-NMM <b>109.7</b>	APCH CRS <b>191°</b>	Rwy Idg <b>8001</b>
		TDZE <b>316</b>
		Arpt Elev <b>316</b>

AL-5079 [USN]

MERIDIAN NAS (MC CAIN FIELD) (KNMM)

<p>▼ * When ALS inop, increase all CAT vis to <math>\frac{3}{4}</math> mile.</p> <p>** When ALS inop, increase CAT AB vis to 1 mile, CAT CD vis to <math>1\frac{1}{8}</math> miles.</p>	<p>MALS R</p> <p>A5</p>	<p>MISSED APPROACH: Climb to 800, then climbing left turn to 2100 to intercept NMM R-141 to UBERY and hold.</p>
---	-------------------------	---

ATIS ★ <b>290.525</b>	MERIDIAN APP CON <b>120.95 276.4</b>	NAVY MC CAIN TOWER ★ <b>126.2 340.2</b>	GND CON <b>336.4</b>	CLNC DEL <b>301.0</b>	ASR/PAR
--------------------------	---	--	-------------------------	--------------------------	---------

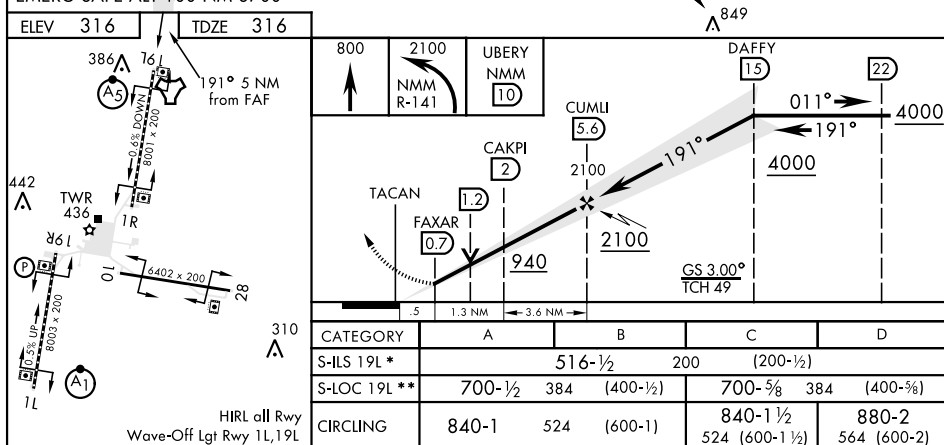


CAUTION: GS unusable beyond 3° right of localizer course and 7° left of localizer course.

1544  
ALOCALIZER 109.7  
I-NMMMERIDIAN  
Chan 56 NMM

## RADAR REQUIRED

EMERG SAFE ALT 100 NM 3700



MERIDIAN, MISSISSIPPI

32°33'N-88°33'W

MERIDIAN NAS (MC CAIN FIELD) (KNMM)

Amdt 2 12SEP19

## ILS or LOC/DME RWY 19L