

MERIDIAN, MISSISSIPPI

RNAV (GPS) RWY 19L

APCH CRS	Rwy Idg	8001
191°	TDZE	316
	Arpt Elev	316

AL-5079 (USN)

MERIDIAN NAS (MC CAIN FLD) (KNMM)

<p>▼ * When ALS inop, increase CAT AB vis to 1 mile, increase CAT CDE to 1 3/8 miles. ** When ALS inop, increase vis to 1 3/8 miles.</p>	<p>MALSR</p>	<p>MISSED APPROACH: Climb to 2100 direct RUCKS and hold.</p>
--	--------------	--

ATIS★ 290.525	APP CON 119.2 348.7 E 379.275 N 120.5 269.325 S 120.95 276.4 W	MC CAIN TOWER★ 126.2 340.2 RWY 01L, 19L AND 28 126.2 360.2 RWY 01R, 19R AND 10	MC CAIN GND CON 336.4	CLNC DEL 301.0	ASR/PAR
------------------	--	--	--------------------------	-------------------	---------

DME/DME RNP-0.3 NA

For uncompensated Baro-VNAV systems, LNAV/VNAV NA below -15°C (4°F) or above 41°C (107°F).

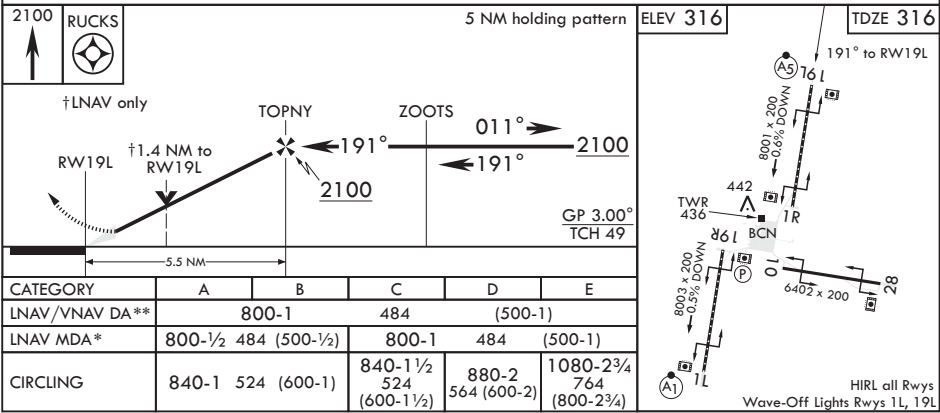
719

1536

MERIDIAN
MEI

RUCKS

EMERG SAFE ALT 100 NM 3700



MERIDIAN, MISSISSIPPI

32°33'N - 88°33'W

MERIDIAN NAS (MC CAIN FLD) (KNMM)

Amdt 3 26MAR20

RNAV (GPS) RWY 19L

SC-4, 03 DEC 2020 to 31 DEC 2020