

MERIDIAN, MISSISSIPPI

RNAV (GPS) RWY 1L

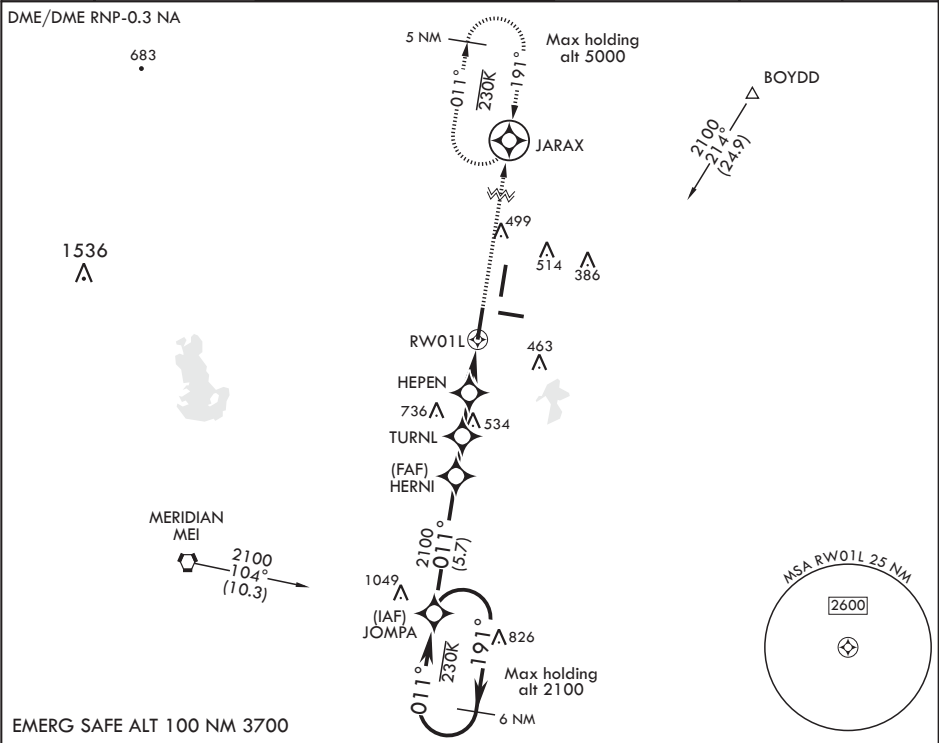
APCH CRS	Rwy Idg	8003
011°	TDZE	254
	Arprt Elev	316

AL-5079 (USN)

MERIDIAN NAS (MC CAIN FLD) (KNMM)

<p>▼ * When ALS inop, increase CAT AB vis to 1 mile, CAT CDE to 1 3/8 miles.</p>	<p>ALSF-1</p>	<p>MISSED APPROACH: Climb to 2100 direct JARAX and hold.</p>
--	---------------	--

<p>ATIS★</p> <p>290.525</p>	<p>APP CON</p> <p>119.2 348.7 E</p> <p>379.275 N</p> <p>120.5 269.325 S</p> <p>120.95 276.4 W</p>	<p>MC CAIN TOWER★</p> <p>126.2 340.2 RWY 01L, 19L AND 28</p> <p>126.2 360.2 RWY 01R, 19R AND 10</p>	<p>MC CAIN GND CON</p> <p>336.4</p>	<p>CLNC DEL</p> <p>301.0</p>	<p>ASR/PAR</p>
-----------------------------	---	---	-------------------------------------	------------------------------	----------------



6 NM holding pattern					<p>2100</p> <p>JARAX</p> <p>ELEV 316</p> <p>TDZE 254</p>
CATEGORY	A	B	C	D	E
LNAV MDA*	760-1/2	506 (500-1/2)	760-1	506	(500-1)
CIRCLING	840-1	524 (600-1)	840-1 1/2 524 (600-1 1/2)	880-2 564 (600-2)	1080-2 3/4 764 (800-2 3/4)

MERIDIAN, MISSISSIPPI

32°33'N - 88°33'W

MERIDIAN NAS (MC CAIN FLD) (KNMM)

Amdt 3 26MAR20

RNAV (GPS) RWY 1L