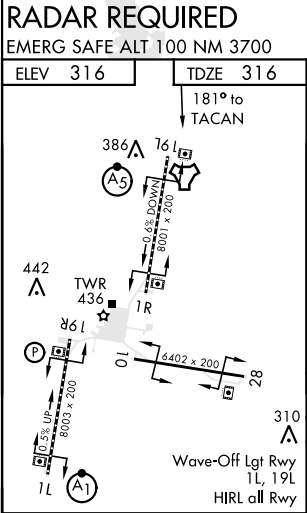
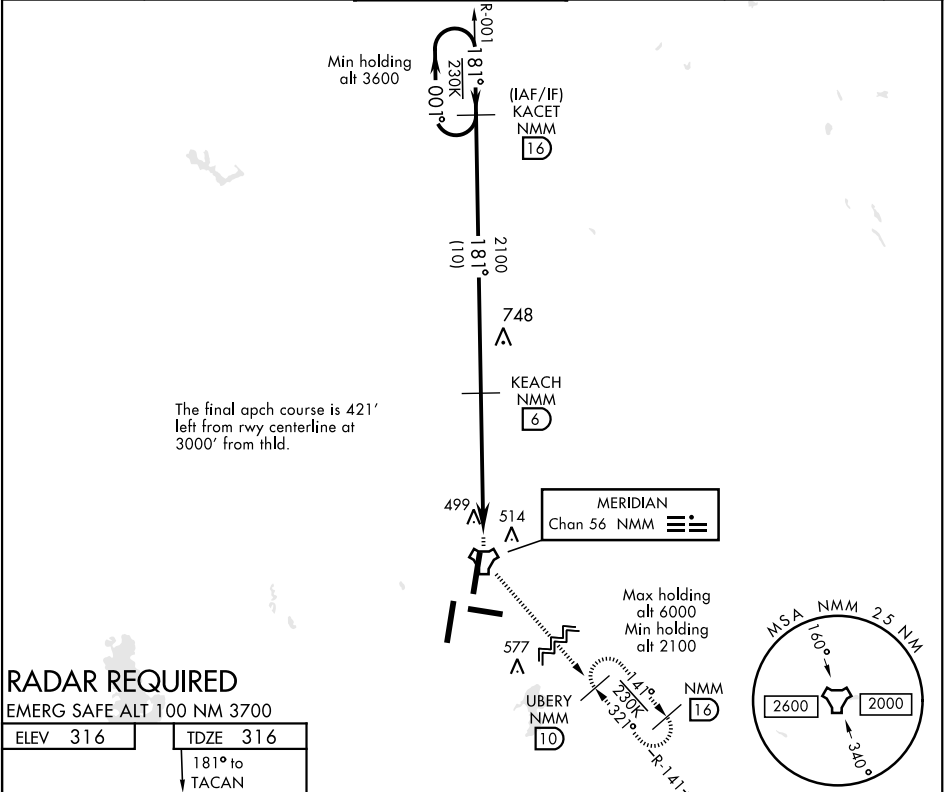


TACAN RWY 19L

TACAN NMM Chan <b>56</b>	APCH CRS <b>181°</b>	Rwy Idg TDZE Arpt Elev <b>8001</b> <b>316</b> <b>316</b>	JAL-5079 [USN]	MERIDIAN NAS (MC CAIN FIELD) (KNMM)	
-----------------------------	-------------------------	---	----------------	-------------------------------------	--

* When ALS inop, increase CAT AB vis to 1 mile; CDE vis to 1½ mls.			MALSR (A5)	MISSED APPROACH: Climb to 2100 direct NMM TACAN then via R-141 to UBERY and hold.	
ATIS ★ <b>290.525</b>	MERIDIAN APP CON <b>120.95 276.4</b>	NAVY MC CAIN TOWER ★ <b>126.2 340.2</b>	GND CON <b>336.4</b>	CLNC DEL <b>301.0</b>	ASR/ PAR



CATEGORY	A	B	C	D	E
S-19L *	800-½	484 (500-½)	800-1	484 (500-1)	
CIRCLING	840-1 524 (600-1)	840-1½ 524 (600-1½)	880-2 564 (600-2)	1080-2¾ 764 (800-2¾)	

TACAN RWY 19L

SC-4, 03 DEC 2020 to 31 DEC 2020

SC-4, 03 DEC 2020 to 31 DEC 2020