

WAAS CH 65629 W15A	APP CRS 152°	Rwy Idg TDZE 12 Apt Elev 15
--	------------------------	---

RNAV (GPS) RWY 15
LAKE CHARLES RGNL (LCH)

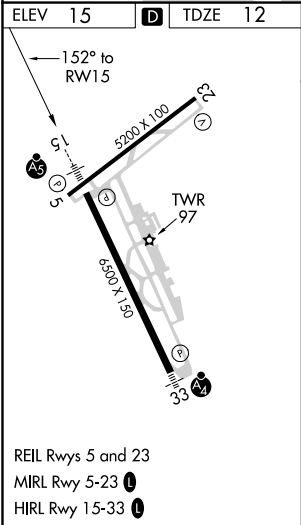
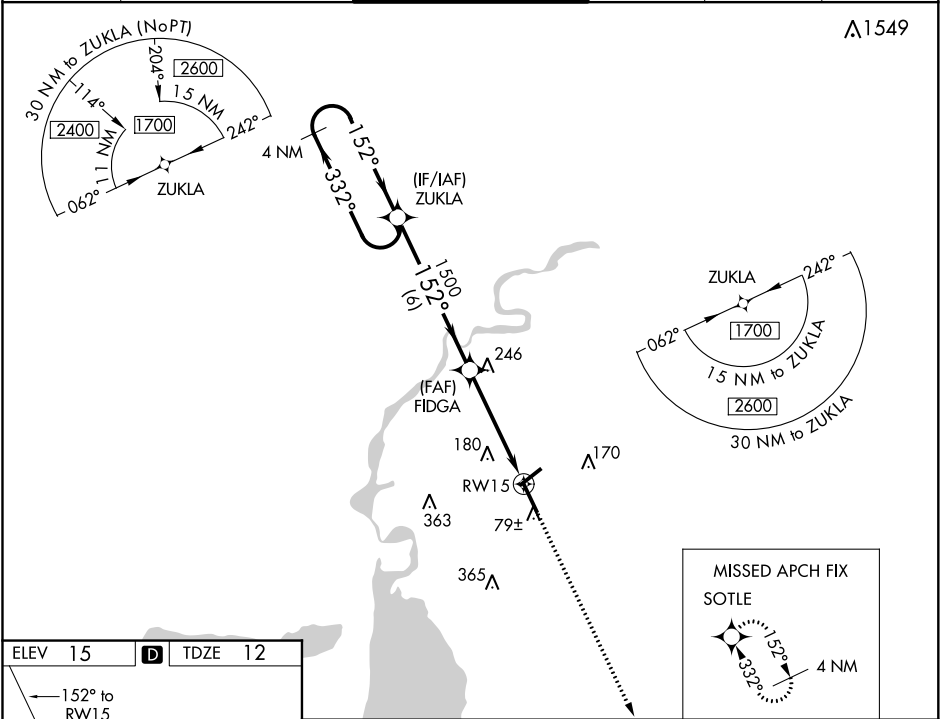
RNP APCH.

For uncompensated Baro-VNAV systems, LNAV/VNAV below -3°C (27°F) or above 43°C (109°F). For inop MALSR, increase LNAV-VNAV all Cats visibility to ½ and LNAV Cats C and D to 1 ½ mile. ** RVR 1800 authorized with use of FD or AP or HUD to DA.



MISSED APPROACH:
Climb to 1900 direct
SOTLE and hold.

ATIS 118.75	LAKE CHARLES APP CON ★ 119.35 353.75	LAKE CHARLES TOWER ★ 120.7 (CTAF) 0 257.8	GND CON 121.8	CLNC DEL 126.25	UNICOM 122.95
-----------------------	--	---	-------------------------	---------------------------	-------------------------



4 NM Holding Pattern		VGSI and RNAV glidepath not coincident (VGSI Angle 3.00/TCH 70).		1900	SOTLE
1700		ZUKLA		FIDGA	
GP 3.00° TCH 55		1500		1500	
		6 NM		3.2 NM	1.3
CATEGORY	A	B	C	D	
LPV DA	212/24		200 (200-½)		
LNAV/VNAV DA	301/24		289 (300-½)		
LNAV MDA	500/24		500/50		488 (500-1)
CIRCLING	500-1		580-1½		680-2¼
			565 (600-1½)		665 (700-2¼)