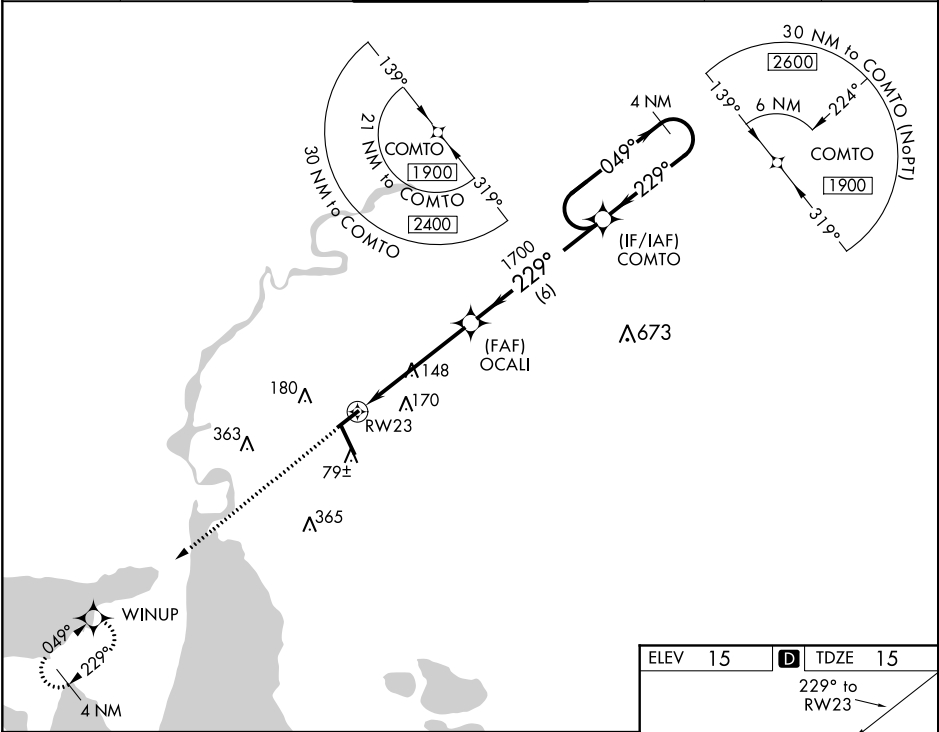


WAAS CH 61041 W23A	APP CRS 229°	Rwy Idg TDZE Apt Elev	5200 15 15
--	------------------------	-----------------------------	---------------------------------------

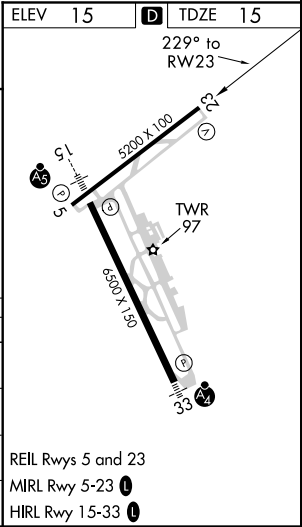
RNAV (GPS) RWY 23
LAKE CHARLES RGNL (LCH)

ASR	For uncompensated Baro-VNAV systems, LNAV/VNAV NA below -2°C (29°F) or above 54°C (130°F). Rwy 23 helicopter visibility reduction below ¾ SM NA. DME/DME RNP-0.3 NA.	MISSED APPROACH: Climb to 1700 direct WINUP and hold.
-----	--	---

ATIS 118.75	LAKE CHARLES APP CON * 119.35 353.75	LAKE CHARLES TOWER * 120.7 (CTAF) 0 257.8	GND CON 121.8	CLNC DEL 126.25	UNICOM 122.95
-----------------------	--	---	-------------------------	---------------------------	-------------------------



1700	WINUP	OCALI	COMTO	4 NM Holding Pattern
*LNAV only.		1700	229°	049° → 1900
	*1.1 NM to RWY23			← 229°
				GP 3.00° TCH 47
	1.1	4 NM	6 NM	
CATEGORY	A	B	C	D
LPV DA	265-¾		250 (300-¾)	
LNAV/ VNAV DA	301-⅞		286 (300-⅞)	
LNAV MDA	400-1 385 (400-1)		400-1½ 385 (400-1½)	
CIRCLING	440-1 425 (500-1)	480-1 465 (500-1)	580-1½ 565 (600-1½)	680-2 665 (700-2)



SC-4, 03 DEC 2020 to 31 DEC 2020

SC-4, 03 DEC 2020 to 31 DEC 2020