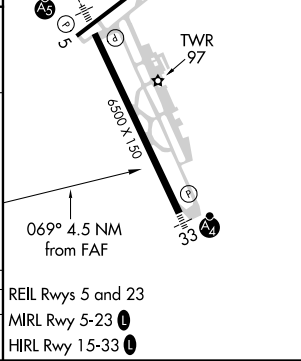
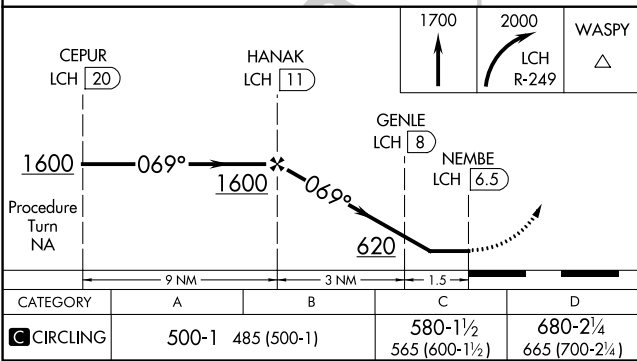
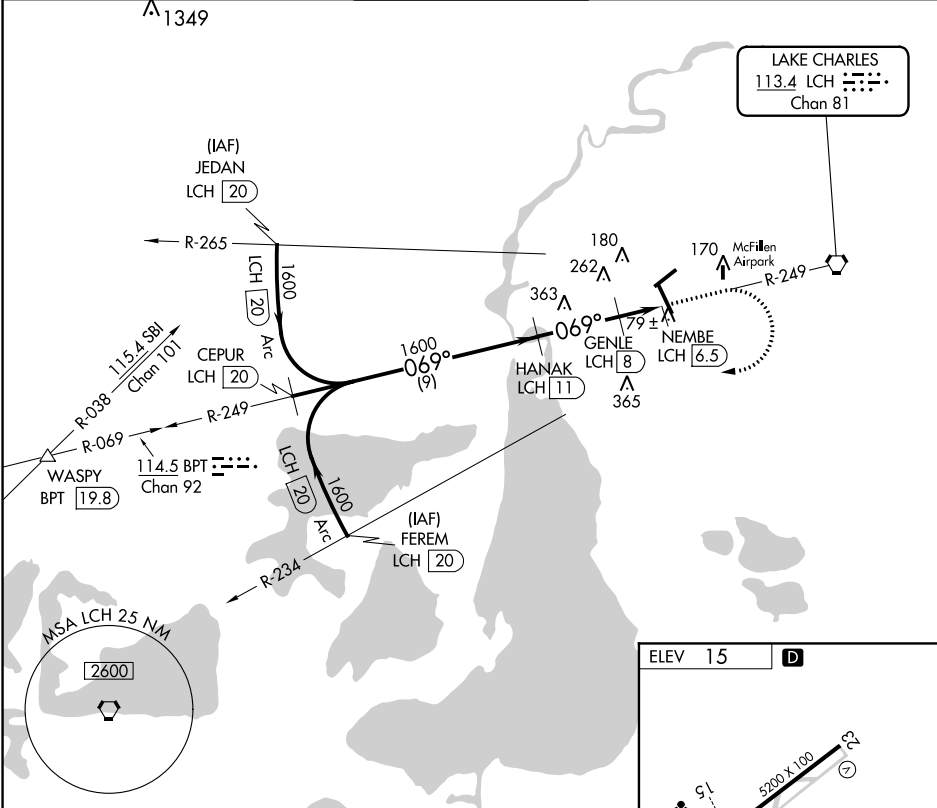


VORTAC LCH 113.4 Chan 81	APP CRS 069°	Rwy Idg TDZE Apt Elev N/A N/A 15
---------------------------------------	------------------------	--

VOR/DME-B
LAKE CHARLES RGNL (LCH)

NA ASR	ATIS 118.75	LAKE CHARLES APP CON* 119.35 353.75	LAKE CHARLES TOWER* 120.7 (CTAF) 257.8	GND CON 121.8	CLNC DEL 126.25	UNICOM 122.95
-----------	-----------------------	---	--	-------------------------	---------------------------	-------------------------

MISSED APPROACH: Climb to 1700, then climbing right turn to 2000 via LCH R-249 to WASPY INT.



SC-4, 03 DEC 2020 to 31 DEC 2020

SC-4, 03 DEC 2020 to 31 DEC 2020