

LOC I-JAN 110.5	APP CRS 159°	Rwy Idg TDZE Apt Elev	8500 312 346
---------------------------	------------------------	-----------------------------	---

ILS or LOC RWY 16L
JACKSON-MEDGAR WILEY EVERS INTL (JAN)

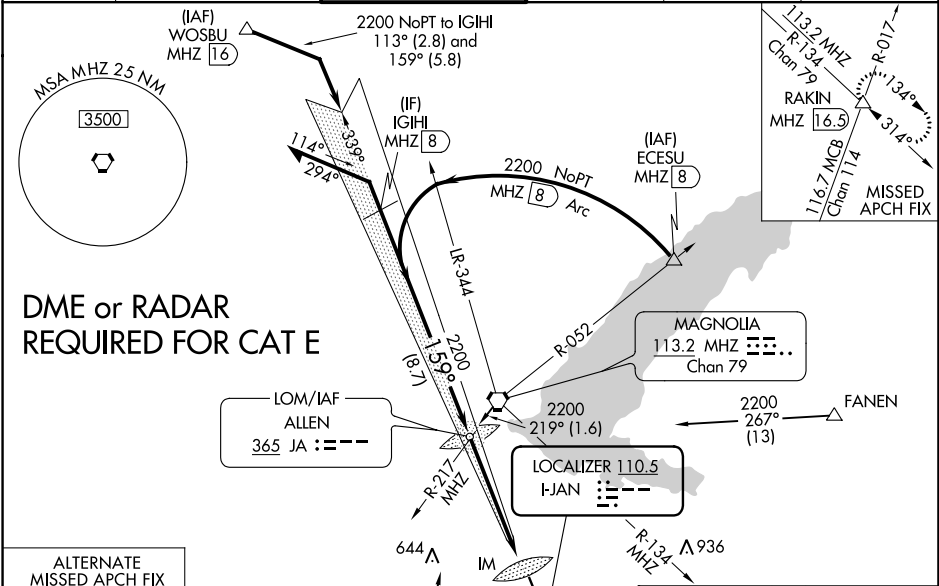
ASR

ALSF-2

Circling NA for Cat E southwest of Rwy 16R-34L. When local altimeter setting not received, use Hawkins Field altimeter setting and increase all DA 19 feet and all MDA 20 feet. For inop ALS, increase S-ILS 16L Cat E visibility to RVR 4000 and increase S-LOC 16L Cats C/D/E visibility to 1½ SM. For inop ALS when using Hawkins Field altimeter setting, increase S-ILS 16L Cat E visibility to RVR 4000 and increase S-LOC 16L Cats C/D/E visibility to 1½ SM. Procedure turn NA for Cat E.

MISSED APPROACH: Climb to 800 then climbing left turn to 3000 on heading 090° and MHZ VORTAC R-134 to RAKIN INT/16.5 DME and hold.

ATIS 121.05	JACKSON APP CON ★ 123.9 317.7	JACKSON TOWER ★ 120.9 (CTAF) 0 352.0	GND CON 121.7 348.6	120.7 0 *	UNICOM 122.95
-----------------------	---	--	-------------------------------	------------------	-------------------------



ALTERNATE MISSED APCH FIX

ALLEN 365 JA : ---

ELEV 346 TDZE 312

159° 5.5 NM from FAF

REIL Rwy 16R 0

REIL Rwy 34R 0

HIRL Rwy 16L-34R and 16R-34L 0

FAF to MAP 5.5 NM

VGSI and ILS glidepath not coincident (VGSI Angle 3.00/TCH 71).		800	3000	MHZ	RAKIN
Remain within 10 NM		JA LOM	hdg 090°	R-134	△
GS 3.00° TCH 55		2200	2155		
		5.3 NM	0.2		
CATEGORY	A	B	C	D	E
S-ILS 16L	512/18 200 (200-½)				
S-LOC 16L	820/24	508 (500-½)	820/55	508 (500-1)	
CIRCLING	880-1	534 (600-1)	900-1½ 554 (600-1½)	960-2 614 (700-2)	1040-2½ 694 (700-2½)
		Knots		60	90
		Min:Sec		5:30	3:40