

| | | |
|--|------------------------|---|
| WAAS CH 72631 W35A | APP CRS 354° | Rwy Idg TDZE 324 Apt Elev 325 |
|--|------------------------|---|

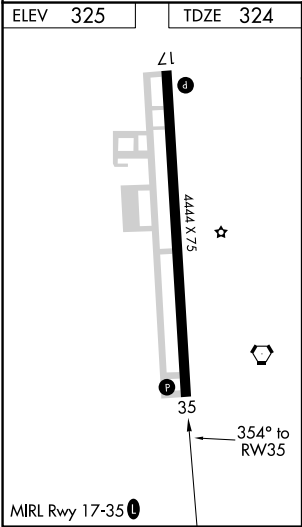
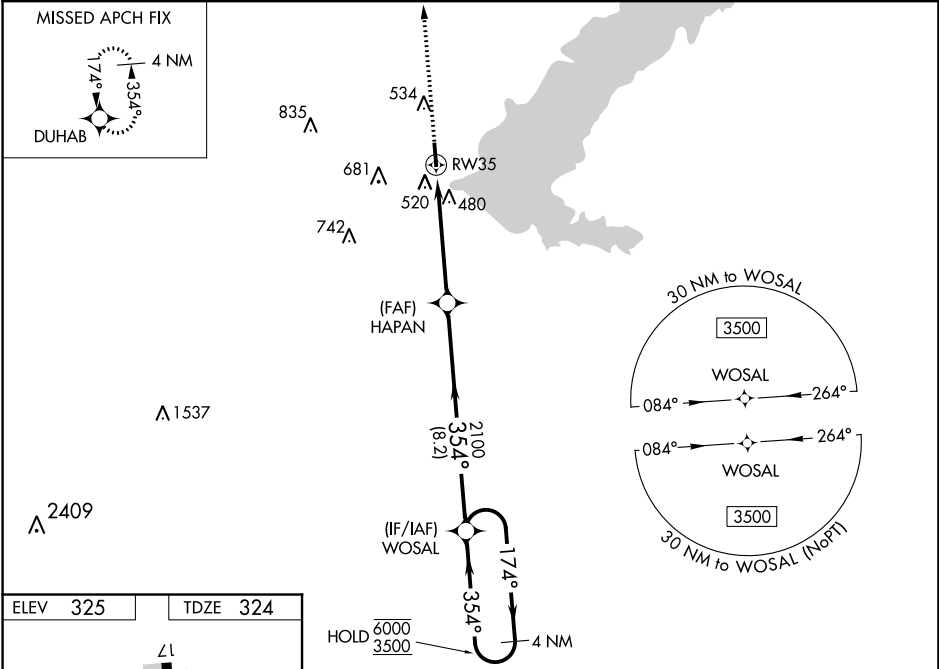
RNAV (GPS) RWY 35
BRUCE CAMPBELL FIELD (MBO)



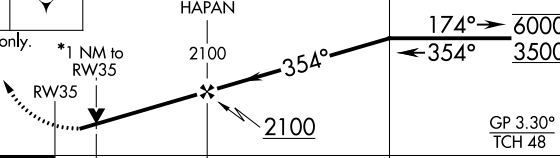

RNP APCH.

Baro-VNAV and VDP NA when using Jackson-Medgar Wiley Evers Intl altimeter setting.
Rwy 35 helicopter visibility reduction below ¾ SM NA. For uncompensated Baro-VNAV systems, LNAV/VNAV NA below -15°C or above 54°C. When local altimeter setting not received, use Jackson-Medgar Wiley Evers Intl altimeter setting and increase all DA 21 feet and visibility ¼ SM, increase all MDA 40 feet and Circling Cat C/D visibility ¼ SM.

MISSED APPROACH:
Climb to 2400 direct DUHAB and hold.

| | | | |
|----------------------------|---|--------------------------|---------------------------------|
| AWOS-3PT 119.125 | JACKSON APP CON ★ 123.9 317.7 | CLNC DEL 125.9 | UNICOM 122.8 (CTAF) 0 |
|----------------------------|---|--------------------------|---------------------------------|



| | | | | |
|--|---|-----------------------|-----------------------|-------------------------|
| 2400 | DUHAB | | | |
|  |  | | | |
|  | | | | |
| *LNAV only. | | | | |
| *1 NM to RW35 | | | | |
| 2100 | | | | |
| 354° | | | | |
| 174° | | | | |
| 6000 | | | | |
| 3500 | | | | |
| GP 3.30° | | | | |
| TCH 48 | | | | |
| 1 NM | | | | |
| 4 NM | | | | |
| 8.2 NM | | | | |
| CATEGORY | | | | |
| A | | | | |
| B | | | | |
| C | | | | |
| D | | | | |
| LPV | DA | 643-7/8 319 (400-7/8) | | |
| LNAV/VNAV | DA | 750-1¼ 426 (500-1¼) | | |
| LNAV | MDA | 780-1 | 456 (500-1) | 780-13/8 456 (500-13/8) |
|  CIRCLING | 820-1 495 (500-1) | 840-1 515 (600-1) | 1040-2 715 (800-2) | 1040-2¼ 715 (800-2¼) |