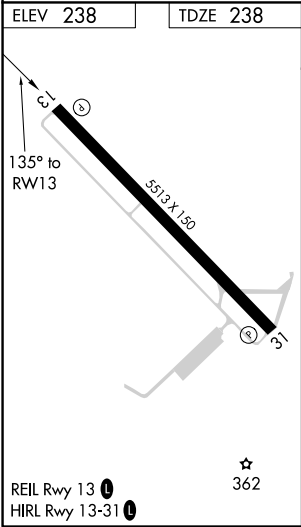
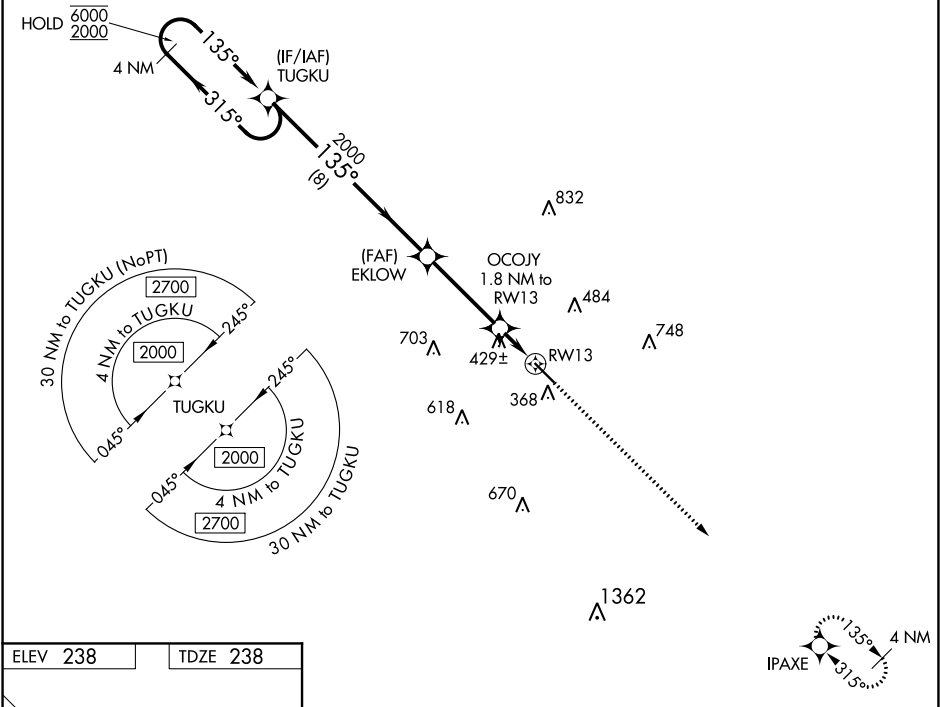


WAAS CH <b>45704</b> <b>W13A</b>	APP CRS <b>135°</b>	Rwy Idg <b>5513</b> TDZE <b>238</b> Apt Elev <b>238</b>
--	------------------------	---

RNAV (GPS) RWY 13  
HESLER-NOBLE FIELD (LUL)

RNP APCH. ▼ For uncompensated Baro-VNAV systems, LNAV/VNAV NA ▲ below -15°C or above 54°C.	MISSED APPROACH: Climb to 2000 direct IPAXE and hold.
--	---

AWOS-3PT <b>119.275</b>	HOUSTON CENTER <b>126.8 327.8</b>	UNICOM <b>123.05 (CTAF) 0</b>
----------------------------	--------------------------------------	----------------------------------



4 NM Holding Pattern		VGSi and RNAV glidepath not coincident (VGSi angle 3.00/TCH 40).		2000	IPAXE
TUGKU		EKLW	OCOJY	*LNAV only.	
6000 ← 315°		2000 → 135°	2000	*840	
GP 3.00° TCH 40		8 NM	3.6 NM	0.5 NM	1.3 NM
CATEGORY	A	B	C	D	
LPV DA	488-1		250 (300-1)		
LNAV/VNAV DA	759-1 3/4		521 (600-1 3/4)		
LNAV MDA	680-1	442 (500-1)	680-1 3/8 442 (500-1 3/8)	680-2 442 (500-2)	
CIRCLING	700-1 462 (500-1)	800-1 562 (600-1)	1040-2 1/4 802 (900-2 1/4)	1060-2 3/4 822 (900-2 3/4)	

SC-4, 03 DEC 2020 to 31 DEC 2020

SC-4, 03 DEC 2020 to 31 DEC 2020