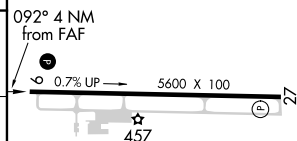
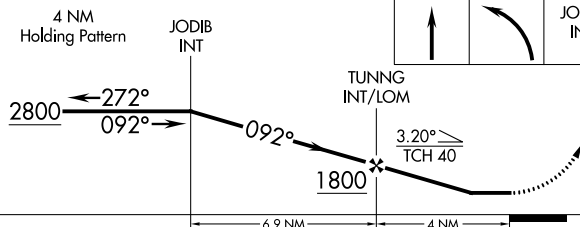
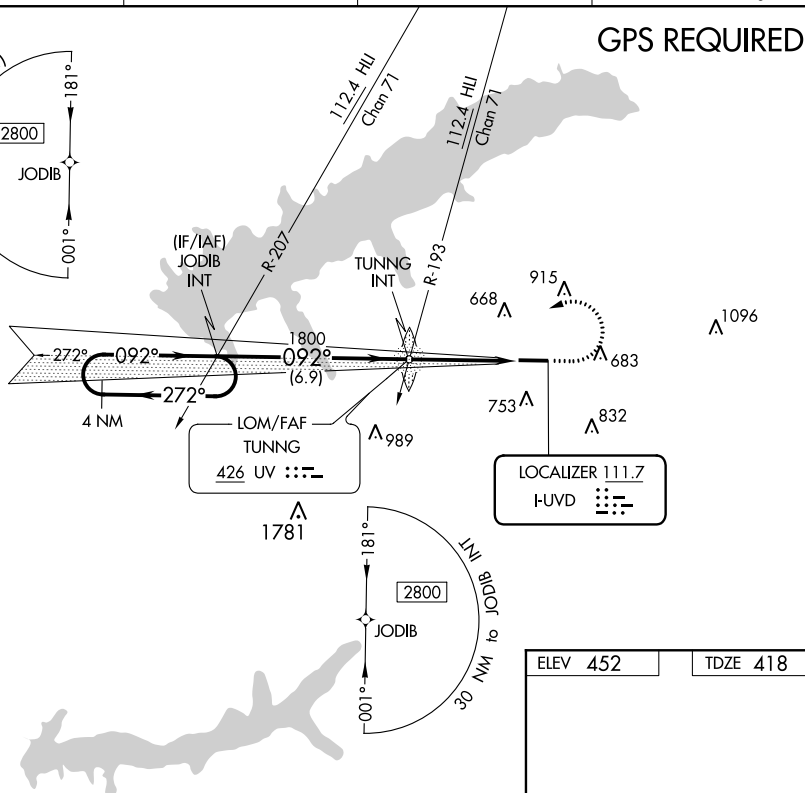


LOC Y RWY 9
UNIVERSITY-OXFORD (UOX)

MISSED APPROACH: Climb to 1100 then climbing left turn to 2800 direct JODIB INT and hold.

UNICOM
123.0 (CTAF) **L**

CATEGORY	A	B	C	D	MRL Rwy 9-27 REIL Rwy 27					
S-LOC 9	920-1	502 (500-1)	920-1 $\frac{3}{8}$	502 (500-1 $\frac{3}{8}$)	FAF to MAP 4 NM					
CIRCLING	980-1	1060-1	1380-2 $\frac{3}{4}$	1380-3	Knots	60	90	120	150	180
	528 (600-1)	608 (700-1)	928 (1000-2 $\frac{3}{4}$)	928 (1000-3)	Min:Sec	4:00	2:40	2:00	1:36	1:20