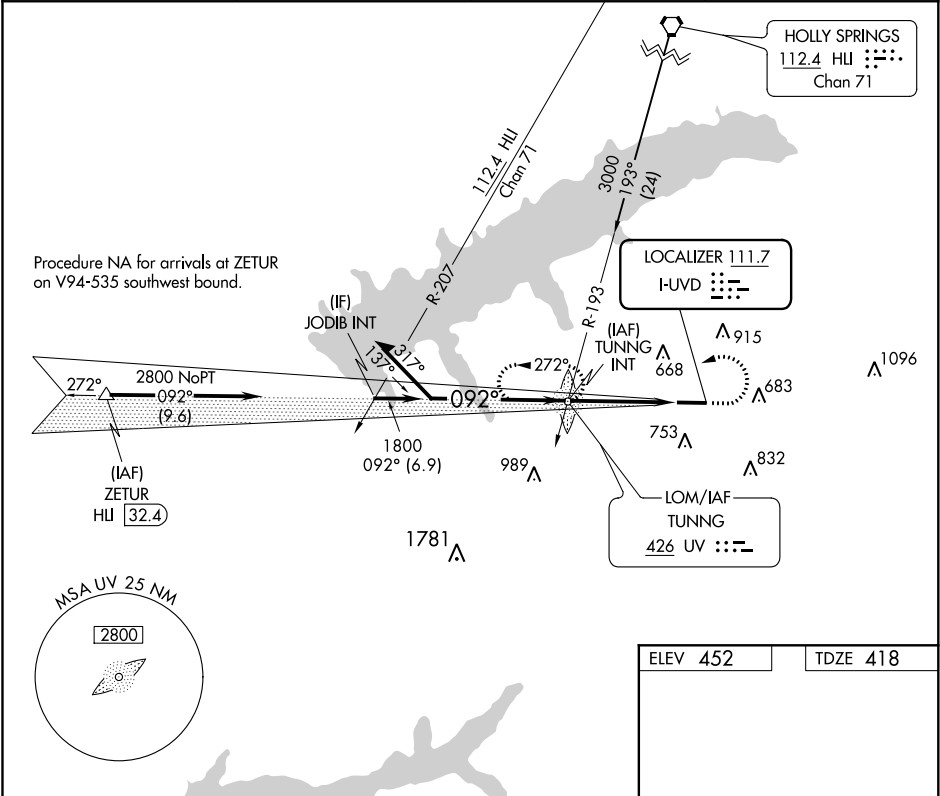


ADF required. When local altimeter setting not received, use Olive Branch altimeter setting and increase all MDA 100 feet; increase S-LOC Cats C, D visibility 3/8 mile and Circling Cat C visibility 1/4 mile.

MISSED APPROACH: Climb to 1100 then climbing left turn to 2800 direct TUNNG LOM/INT and hold, continue climb-in-hold to 2800.

AWOS-3PT 132.725	MEMPHIS CENTER 128.5 381.4	GCO 135.075	UNICOM 123.0 (CTAF) 0
---------------------	-------------------------------	----------------	--------------------------



Remain within 10 NM		TUNNG LOM/INT		1100	2800	UV
2800		272°		092° 4 NM from FAF		
1800		092°		0.7% UP → 5600 X 100		
3.20° TCH 40		4 NM		457		
CATEGORY	A	B	C	D	MIRL Rwy 9-27 0	
S-LOC 9	920-1	502 (500-1)	920-1 3/8	502 (500-1 3/8)	REIL Rwy 27	
CIRCLING		980-1 528 (600-1)	1060-1 608 (700-1)	1380-2 3/4 928 (1000-2 3/4)	1380-3 928 (1000-3)	FAF to MAP 4 NM
						Knots 60 90 120 150 180
						Min:Sec 4:00 2:40 2:00 1:36 1:20