

APP CRS	Rwy Idg	5009
317°	TDZE	480
	Apt Elev	494

RNAV (GPS) RWY 32
KOSCIUSKO-ATTALA COUNTY (OSX)

KOSCIUSKO-ATTALA COUNTY (OSX)

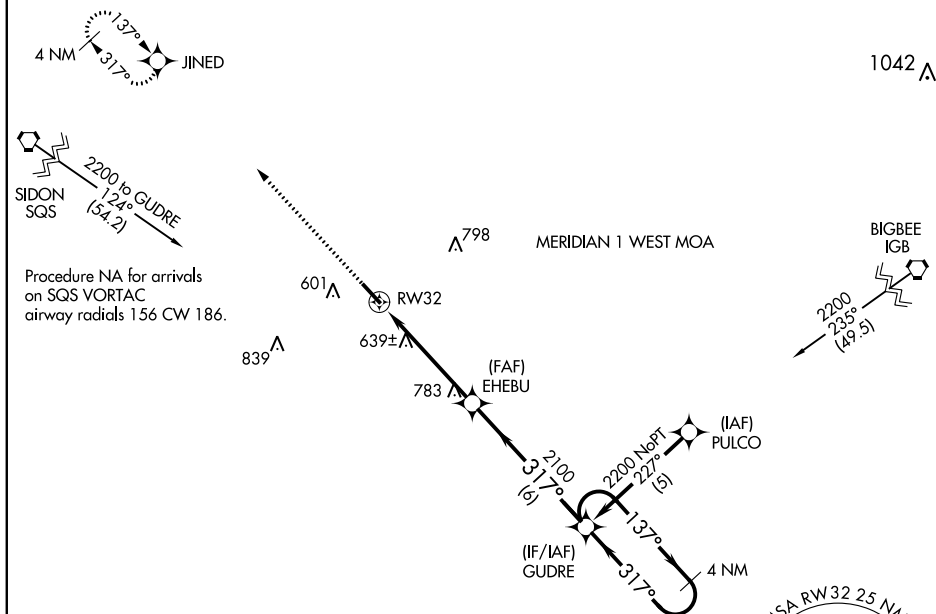
T DME/DME NP-0.3 NA. Helicopter visibility reduction below 5M NA.
A NA Procedure NA at night. Use Philadelphia altimeter setting; when not received, use Greenwood altimeter setting and increase all MDA 100 feet and LNAV Cat C visibility $\frac{3}{8}$ mile and Circling Cat C visibility $\frac{1}{4}$ mile.

MISSED APPROACH: Climb to 2100 direct
JINED and hold.

MPE AWOS-3P
118.725

MEMPHIS CENTER
132.75 350.25

CTAF
122.9 **L**



ELEV	494		TDZE	480
------	-----	--	------	-----

