

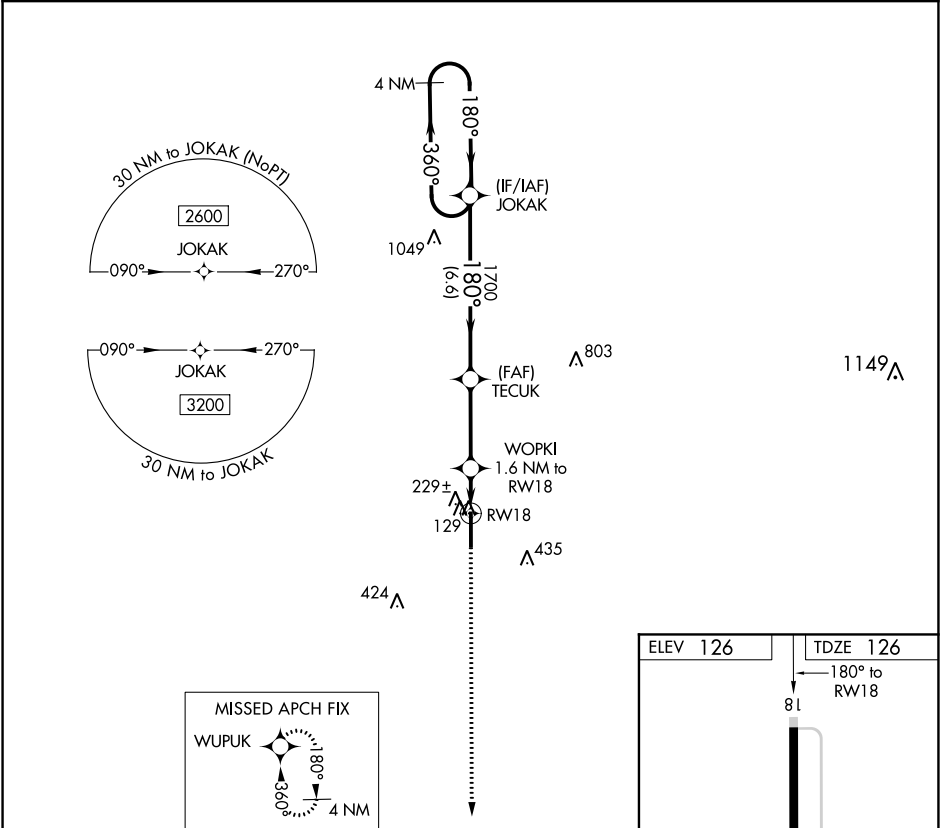
▼

▲NA

DME/DME RNP-0.3 NA. Rwy 18 helicopter visibility reduction below 1 SM NA. Straight-in/Circling to Rwy 18 NA at night. Use Greenville altimeter setting; when not received, use Greenwood altimeter setting and increase all MDA 40 feet, increase LNAV Cats C and D visibility 1/8 mile and Circling Cat D visibility 1/4 mile.

MISSED APPROACH: Climb to 2500 direct WUPUK and hold.

GLH ASOS 125.525	MEMPHIS CENTER 135.875 269.35	UNICOM 122.8 (CTAF) 0
---------------------	----------------------------------	--------------------------



4 NM Holding Pattern		JOKAK	TECUK	WOPKI	RW18
2600		1700	680		
360°		180°	3.04°	1.6 NM to RW18	
180°			TCH 45		
6.6 NM		3.2 NM	1.6 NM		
CATEGORY	A	B	C	D	
LNAV MDA	520-1	394 (400-1)	520-1 1/8	394 (400-1 1/8)	
CIRCLING	580-1	454 (500-1)	600-1 1/2	780-2	
			474 (500-1 1/2)	654 (700-2)	

ELEV 126

TDZE 126

180° to RW18

81

700 X 150

36

MIRL Rwy 18-36 0