

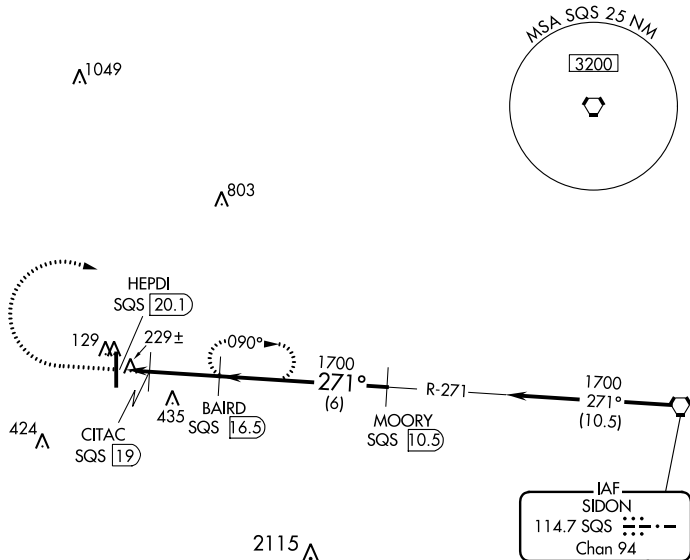
VORTAC SQS <b>114.7</b> Chan <b>94</b>	APP CRS <b>271°</b>	Rwy Idg TDZE Apt Elev	<b>N/A</b> <b>N/A</b> <b>126</b>
----------------------------------------------	------------------------	-----------------------------	----------------------------------------

VOR/DME-A  
INDIANOLA MUNI (IDL)

**V** Use Greenville altimeter setting; when not received, use Greenwood altimeter setting and increase all MDA 40 feet and Circling Cat D visibility  $\frac{1}{4}$  mile. Circling to Rwy 18 NA at night. Helicopter visibility reduction below 1 SM NA.

**MISSED APPROACH:** Climb to 900, then climbing right turn to 1700 on SQS VORTAC R-271 to BAIRD/16.50 DME and hold.

GLH ASOS <b>125.525</b>	MEMPHIS CENTER <b>135.875 269.35</b>	UNICOM <b>122.8 (CTAF) 0</b>
----------------------------	-----------------------------------------	---------------------------------



Procedure NA for arrivals  
at SQS VORTAC  
on airway radial 273.

