

WAAS CH <b>50419</b> <b>W18A</b>	APP CRS <b>180°</b>	Rwy Idg TDZE <b>333</b> Apt Elev <b>333</b>
--	------------------------	---

RNAV (GPS) RWY 18

GEORGE M BRYAN (STF)

RNP APCH.

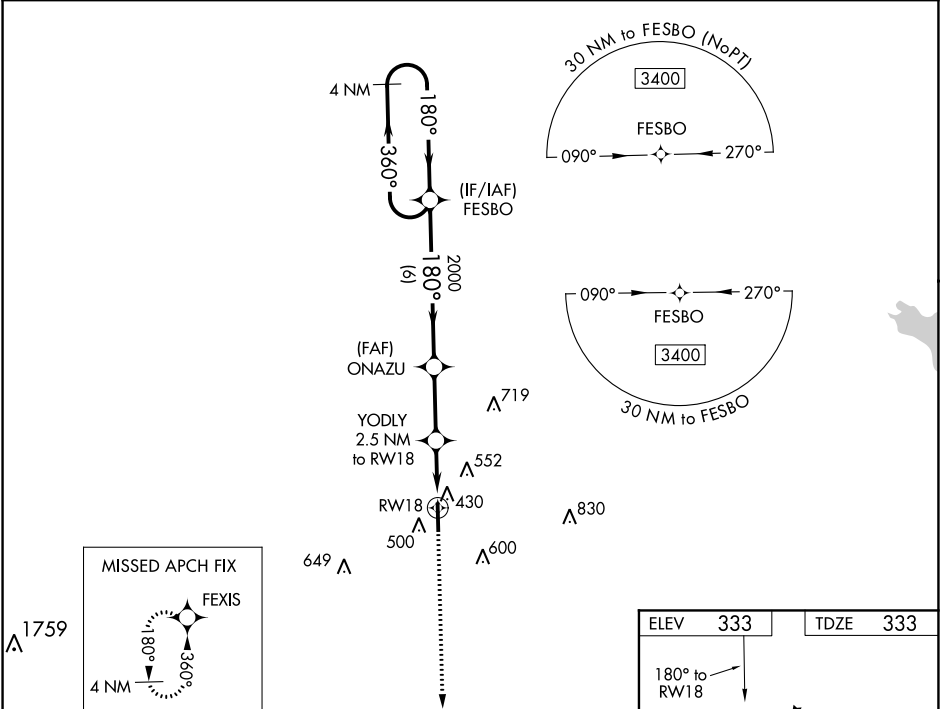
▼

▲

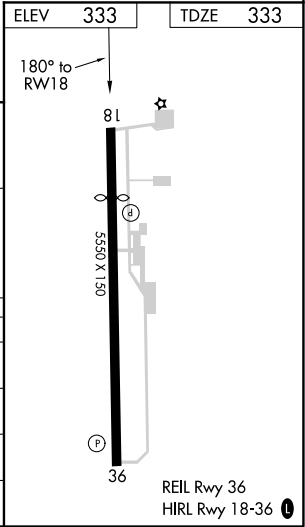
For uncompensated Baro-VNAV systems, LNAV/VNAV NA below -1.5°C or above 54°C. Baro-VNAV and VDP NA when using Golden Triangle Rgnl altimeter setting. Rwy 18 helicopter visibility reduction below ¾ SM NA. When local altimeter setting not received, use Golden Triangle Rgnl altimeter setting and increase all DA/MDA 40 feet; increase LPV all Cats, LNAV/VNAV all Cats and LNAV Cats C/D visibility ½ mile, increase Circling Cat C visibility ¼ mile.

MISSED APPROACH:  
Climb to 3000 direct FEXIS and hold.

AWOS-3PT <b>118.975</b>	COLUMBUS APP CON ★ <b>135.6 323.275</b>	CINC DEL <b>126.25</b>	UNICOM <b>122.7 (CTAF) 0</b>
----------------------------	--	---------------------------	---------------------------------



4 NM Holding Pattern		FESBO	ONAZU	YODLY 2.5 NM to RW18	3000	FEXIS
3400		180°	180°	180°	180° to RW18	
GP 3.00° TCH 36			2000	*1 NM to RW18	*1 NM only.	
		6 NM	2.6 NM	1.5 NM	1 NM	
CATEGORY	A	B	C	D		
LPV DA		633-1	300 (300-1)			
LNAV/VNAV DA		616-1	283 (300-1)			
LNAV MDA		680-1	347 (400-1)			
CIRCLING	920-1	587 (600-1)	920-1½ 587 (600-1½)	1020-2¼ 687 (700-2¼)		



SC-4, 03 DEC 2020 to 31 DEC 2020

SC-4, 03 DEC 2020 to 31 DEC 2020