

APP CRS	Rwy Idg	5005
058°	TDZE	9
	Apt Elev	9

RNAV (GPS) RWY 6
HARRY P WILLIAMS MEMORIAL (PTN)

RNP APCH.

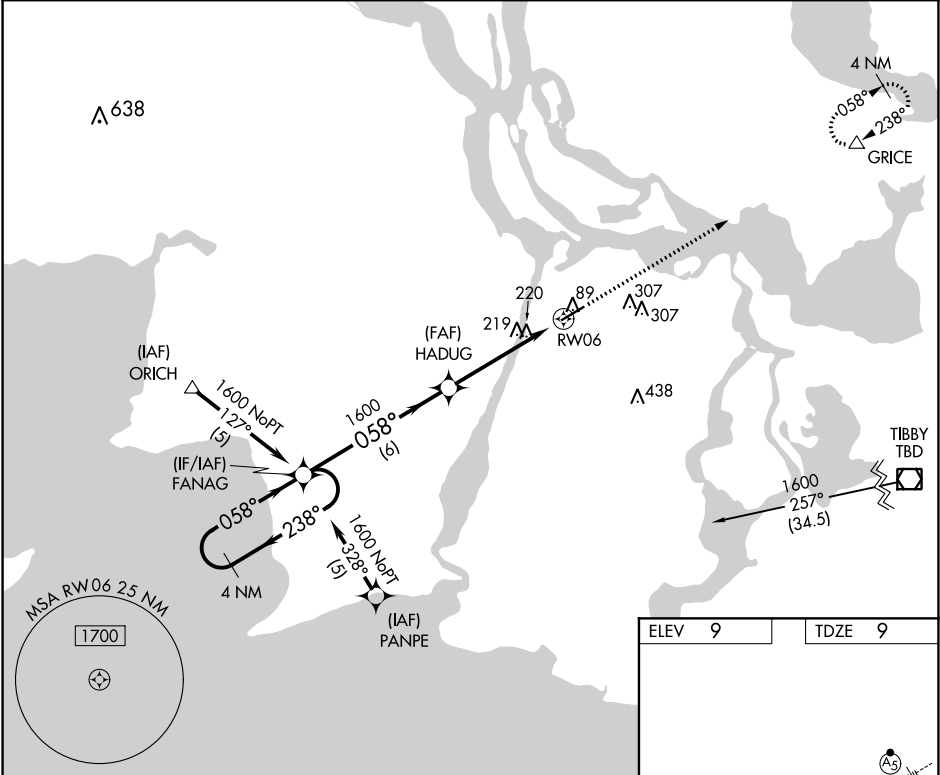
▼

▲

Circling NA to Rwy 4W and 22W. Rwy 6 helicopter visibility reduction below 1 SM NA. When local altimeter setting not received, use New Iberia altimeter setting and increase all MDA 100 feet; increase LNAV Cat C visibility ¼ mile and Circling Cat C visibility ½ mile. When VGSI inop, Straight-in/Circling Rwy 6 procedure NA at night.

MISSED APPROACH: Climb to 1700 direct GRICE and hold.

AWOS-3PT 134.575	NEW ORLEANS APP CON 124.3 350.35	CLNC DEL 124.3	UNICOM 122.8 (CTAF) 0
---------------------	-------------------------------------	-------------------	--------------------------



4 NM Holding Pattern

VGSI and descent angles not coincident (VGSI Angle 3.00/TCH 50).

1700 GRICE

FANAG

HADUG

RW06

1600

238°

058°

1600

3.03°

TCH 45

6 NM

4.8 NM

CATEGORY	A	B	C	D
LNAV MDA	540-1	531 (600-1)	540-1½ 531 (600-1½)	NA
CIRCLING	540-1 531 (600-1)	580-1 571 (600-1)	660-1¾ 651 (700-1¾)	NA

ELEV 9

TDZE 9

5399 X 150

4500 X 100

058° to RW06

REIL Rwy 6

MIRL Rwy 6-24 0

SC-4, 03 DEC 2020 to 31 DEC 2020

SC-4, 03 DEC 2020 to 31 DEC 2020