

WAAS
CH **72824**
W16A

APP CRS
157°

Rwy Idg
TDZE
Apr Elev

5000
413
413

MC COMB/PIKE COUNTY/JOHN E LEWIS FIELD (MCB)

RNAV (GPS) RWY 16

20086

RNP APCH.

▼

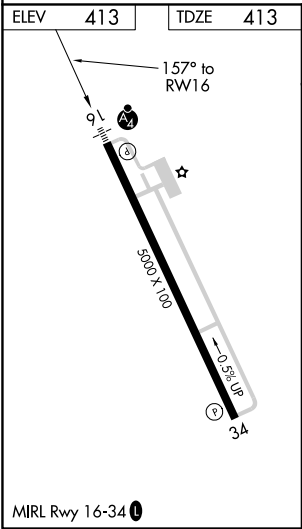
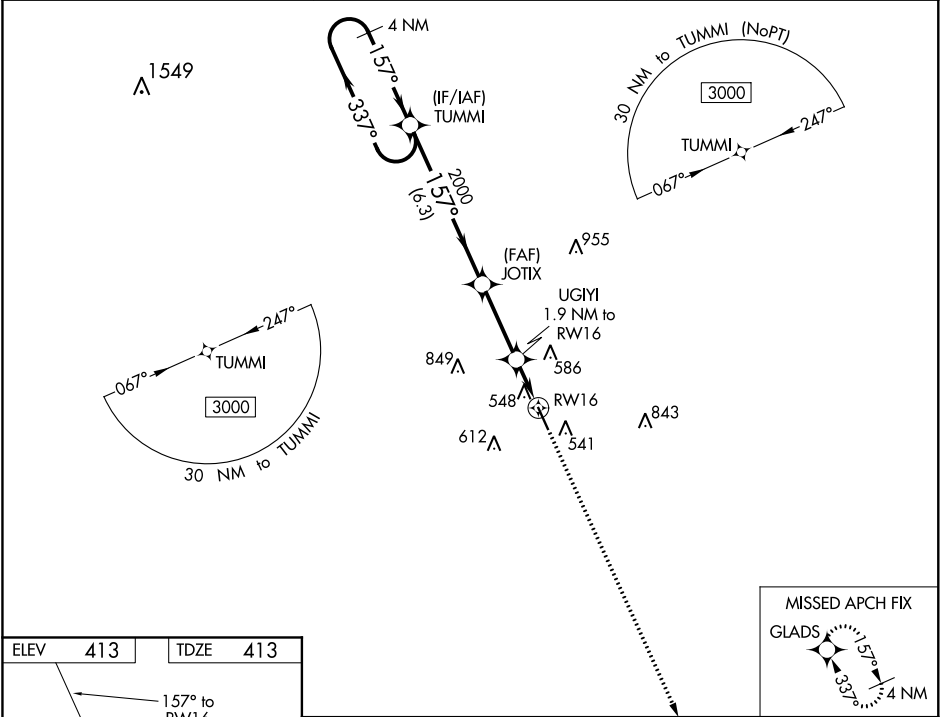
▲

For uncompensated Baro-VNAV systems, LNAV/VNAV NA below -4°C (25°F) or above 54°C (130°F). Inop table does not apply to LPV all Cats. For inop ALS, increase LNAV/VNAV all Cats visibility to 7/8 SM.

MALSF

MISSED APPROACH:
Climb to 3000 direct
GLADS and hold.

ASOS 119.025	HOUSTON CENTER 126.8 327.8	UNICOM 123.05 (CTAF) 0
------------------------	--------------------------------------	----------------------------------



4 NM Holding Pattern		TUMMI	JOTIX	UGIYI	RW16	
3000		337°	157°	157°	1.9 NM to RW16	
GP 3.00°						
TCH 42						
		6.3 NM	3 NM	0.8	1.1	
CATEGORY	A	B	C	D		
LPV DA		615-3/4	202 (300-3/4)			
LNAV/VNAV DA		709-3/4	296 (300-3/4)			
LNAV MDA	800-3/4	387 (400-3/4)	800-7/8	387 (400-7/8)		
CIRCLING	880-1	467 (500-1)	940-1 1/2 527 (600-1 1/2)	1160-2 1/2 747 (800-2 1/2)		