

WAAS CH 73027 W36A	APP CRS 359°	Rwy Idg 5210 TDZE 74 Apt Elev 75
--	------------------------	---

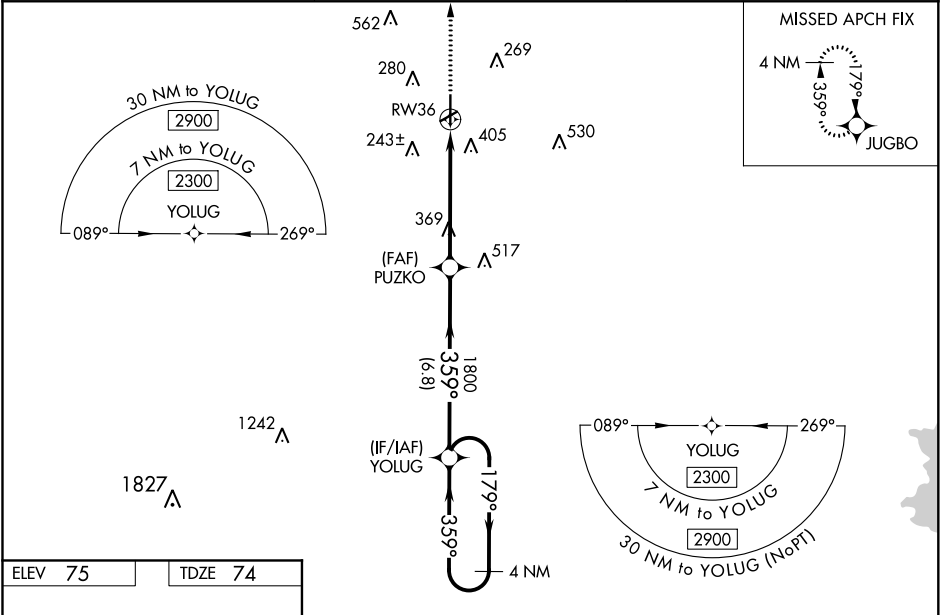
RNAV (GPS) RWY 36

ST LANDRY PARISH-AHART FIELD (OPL)

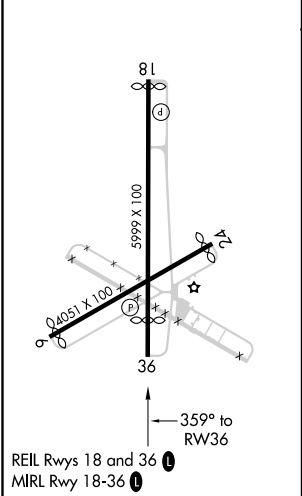
Baro-VNAV NA when using Lafayette altimeter setting. For uncompensated Baro-VNAV systems, LNAV/VNAV NA below -15°C (5°F) or above 43°C (109°F). When VGSI inop, Straight-in/Circling Rwy 36 procedure NA at night. DME/DME RNP-0.3 NA. Visibility reduction by helicopters NA. Circling to Rwy 6/24 NA at night. When local altimeter setting not received, use Lafayette altimeter setting and increase all DA 56 feet and all MDA 60 feet, increase LPV all Cats and LNAV Cat C and D visibility 1/8 mile and LNAV/VNAV all Cats and Circling Cat C and D visibility 1/4 mile.



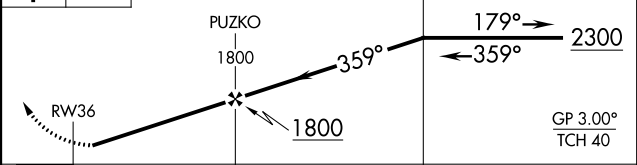
MISSED APPROACH: Climb to 2000 direct JUGBO and hold.

AWOS-3PT 118.775	LAFAYETTE APP CON ★ 128.7 268.7	UNICOM 123.0 (CTAF) 0
----------------------------	---	---------------------------------



ELEV 75	TDZE 74
---------	---------



2000	JUGBO	VGSI and RNAV glidepath not coincident (VGSI Angle 3.50/TCH 59).		4 NM Holding Pattern		
						
CATEGORY		A		B	C	D
LPV	DA	351-1		277 (300-1)		
LNAV/ VNAV	DA	693-2¼		619 (700-2¼)		
LNAV	MDA	620-1	546 (600-1)	620-1½		546 (600-1½)
CIRCLING		780-1	705 (800-1)	780-2 705 (800-2)	780-2¼ 705 (800-2¼)	