

VORTAC LFT	APP CRS	Rwy Idg	5210
109.8	343°	TDZE	74
Chan 35		Apt Elev	75

VOR/DME RWY 36

ST LANDRY PARISH-AHART FIELD (OPL)

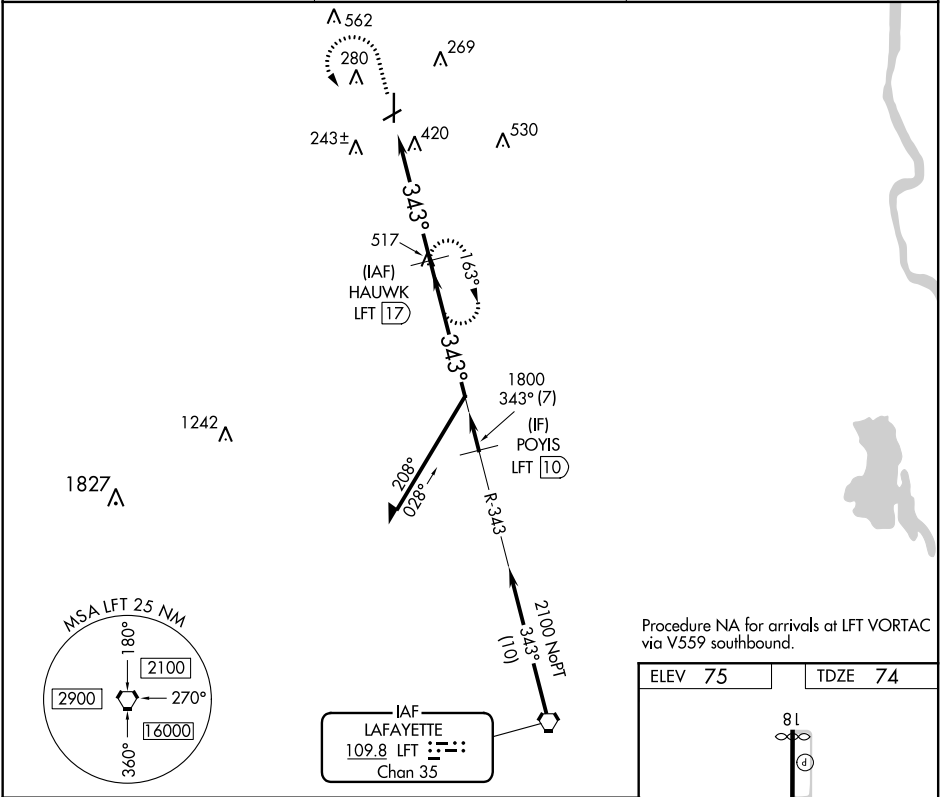
▼

▲NA

If local altimeter setting not received, use Lafayette Rgnl altimeter setting and increase all MDAs 60 feet. Rwy 36 helicopter visibility reduction below ¾ SM NA. Circling Rwy 6, 24 NA at night.

MISSED APPROACH: Climb to 1000 then climbing left turn to 2100 via heading 120° and LFT R-343 to HAUWK 17 DME and hold.

AWOS-3PT	LAFAYETTE APP CON★	UNICOM
118.775	128.7 268.7	123.0 (CTAF) 0



CATEGORY	HAUWK LFT 17			
	1000	2100	HAUWK LFT 17	Remain within 10 NM
S-36	720-1 646 (700-1)	720-1¼ 646 (700-1¼)	720-1¾ 646 (700-1¾)	720-2 646 (700-2)
CIRCLING	780-1 705 (800-1)	780-1¼ 705 (800-1¼)	780-2 705 (800-2)	780-2¼ 705 (800-2¼)

