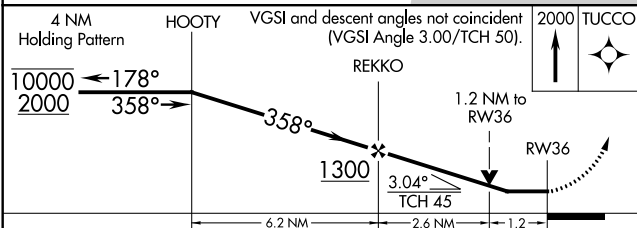
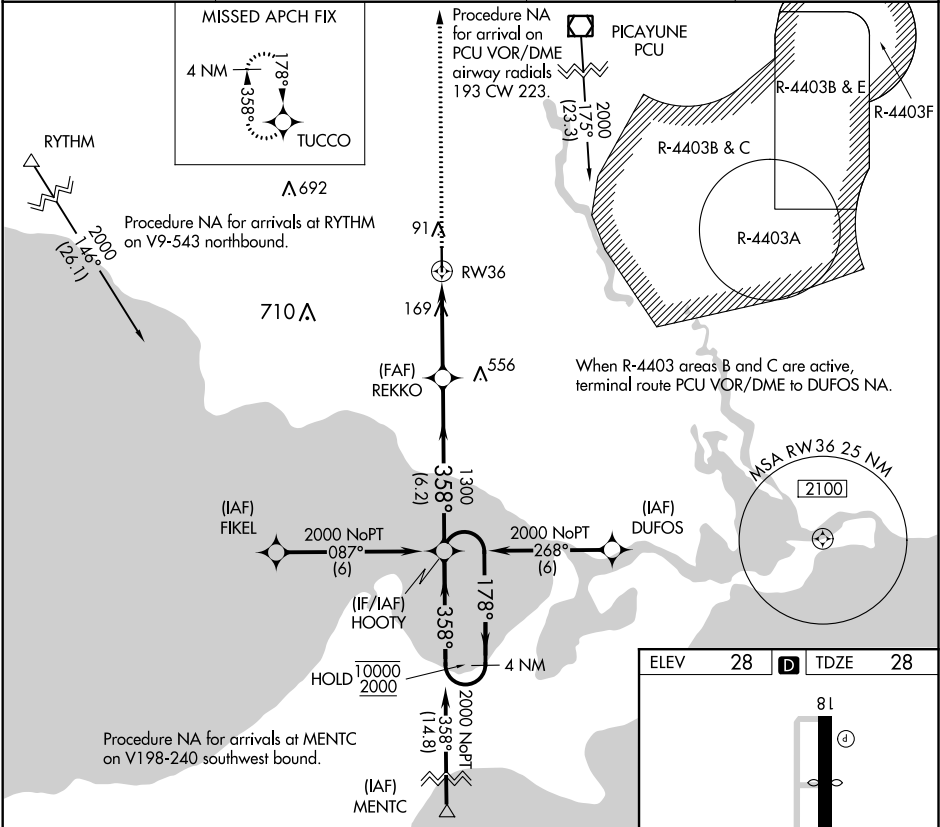


APP CRS	Rwy Ldg	5001
358°	TDZE	28
	Apt Elev	28

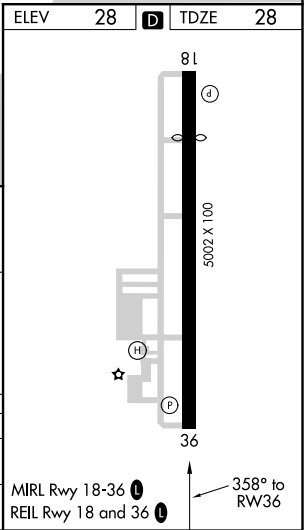
RNAV (GPS) RWY 36  
SLIDELL (ASD)

RNP APCH.	MISSED APPROACH: Climb to 2000 direct TUCCO and hold.
Rwy 36 helicopter visibility reduction below 3/4 SM NA.	

ASOS 132.475	NEW ORLEANS APP CON 133.15 290.3	UNICOM 122.8 (CTAF)	GCO 135.075
-----------------	-------------------------------------	------------------------	----------------



CATEGORY	A	B	C	D
LNVA MDA	460-1	432 (500-1)	460-1 1/4 432 (500-1 1/4)	NA
CIRCLING	480-1	452 (500-1)	520-1 1/2 492 (500-1 1/2)	NA



SC-4, 03 DEC 2020 to 31 DEC 2020

SC-4, 03 DEC 2020 to 31 DEC 2020