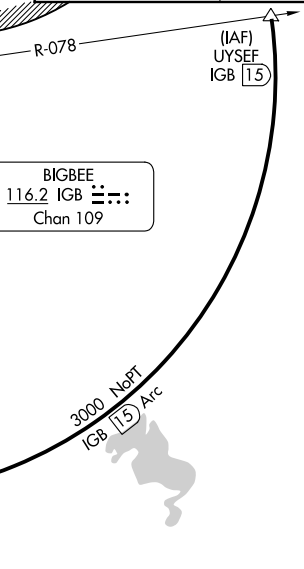


ILS or LOC RWY 36
GOLDEN TRIANGLE RGWL (GTR)

local 39 feet ns	MISSED APPROACH: Climb to 700 then climbing left turn to 2400 on IGB VORTAC R-266 to HANOP INT/IGB 13 DME and hold.
------------------------	---

	CLNC DEL 126.25 (When twr closed)	UNICOM 122.95
--	--	-------------------------



ELEV	264	TDZE	261
------	-----	------	-----

Diagram illustrating the HIRL Rwy 18-36 approach. The runway is 8003 x 150 feet. The diagram shows the runway, taxiway, and various navigational aids including a TWR 346, a 36 marker, and a 150 marker. The approach is for 002° 5.4 NM from FAF.

FAF to MAP 5.4 NM					
Knots	60	90	120	150	180
Min:Sec	5:24	3:36	2:42	2:10	1:48

GOLDEN TRIANGLE RGNL (GTR)
ILS or LOC RWY 36