

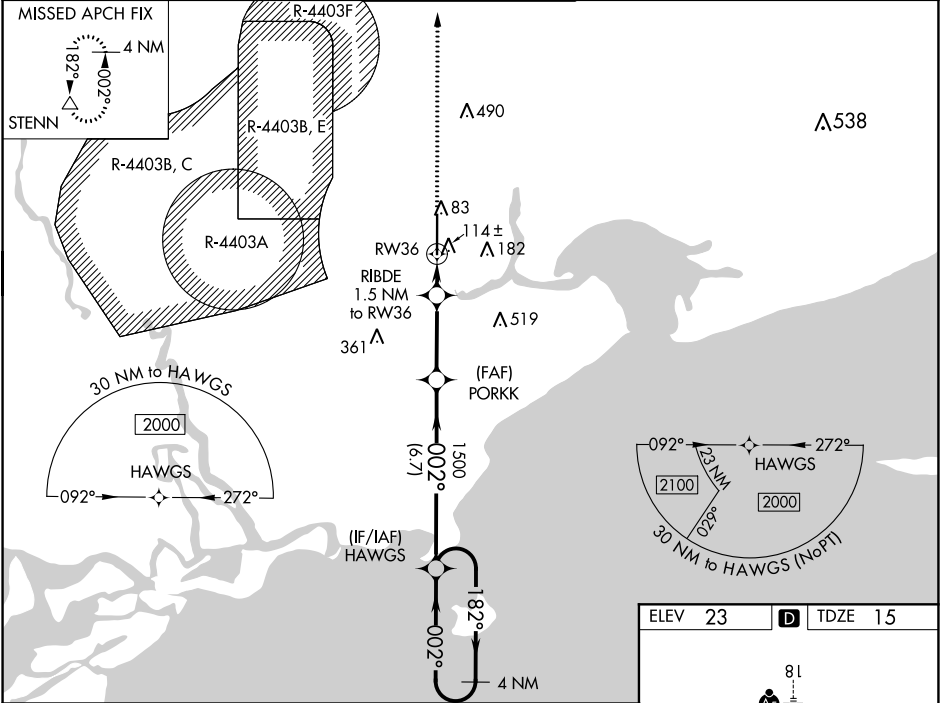
WAAS CH 63109 W36A	APP CRS 002°	Rwy Idg 8497 TDZE 15 Apt Elev 23
--	------------------------	---

RNAV (GPS) RWY 36
STENNIS INTL (HSA)

⚠ For uncompensated Baro-VNAV systems, LNAV/VNAV NA below -15°C (5°F) or above 54°C (130°F). Circling NA for Cat E West of Rwy 18-36. DME/DME RNP-0.3 NA. Helicopter visibility reduction below ¾ SM NA. Baro-VNAV and VDP NA when using Gulfport altimeter setting. When local altimeter setting not received, use Gulfport altimeter setting and increase LPV DA to 332 feet and LNAV/VNAV DA to 344 feet and all MDA 60 feet; increase LPV and LNAV/VNAV all Cats visibility ½ mile and LNAV Cats C/D/E and Circling Cats D/E visibility ¼ mile.

MISSED APPROACH: Climb to 2000
direct STENN and hold.

AWOS-3PT 118.375	GULFPORT APP CON ★ 124.6 354.1	STENNIS TOWER ★ 127.15 (CTAF) 0	GND CON 121.725	UNICOM 122.95
----------------------------	--	---	---------------------------	-------------------------



2000 STENN
↑ △

*LNAV only.

CATEGORY	A	B	C	D	E
LPV DA		285-7/8	270 (300-7/8)		
LNAV/VNAV DA		297-7/8	282 (300-7/8)		
LNAV MDA		380-1	365 (400-1)		
CIRCLING	480-1	457 (500-1)	520-1½ 497 (500-1½)	820-2½ 797 (800-2½)	820-2¾ 797 (800-2¾)

ELEV 23 D TDZE 15

REIL Rwy 36 0
HIRL Rwy 18-36 0

002° to RW36